

DF200GKR Assembly Guide

Table of content

1. Open box and uncrate
2. Install rear suspension shock
3. Layout all parts for installation
4. Install front A-arm, tie rod and suspension shock
5. Install front and rear wheel
6. Install steering wheel and dashboard
7. Install Engine electric wire cover box and gas tank
8. Install Rear frame linkage and rear luggage carrier
9. Install Driver seat, seat belt and seat rail
10. Install Passenger seat, seat belt
11. Install upper roll cages
12. Install roof
13. Install spotlight
14. Install spare tire rack and spare tire
15. Install front and rear fender bracket
16. Install battery, Rear net, and Rear-view mirror

1. Open box and uncrate



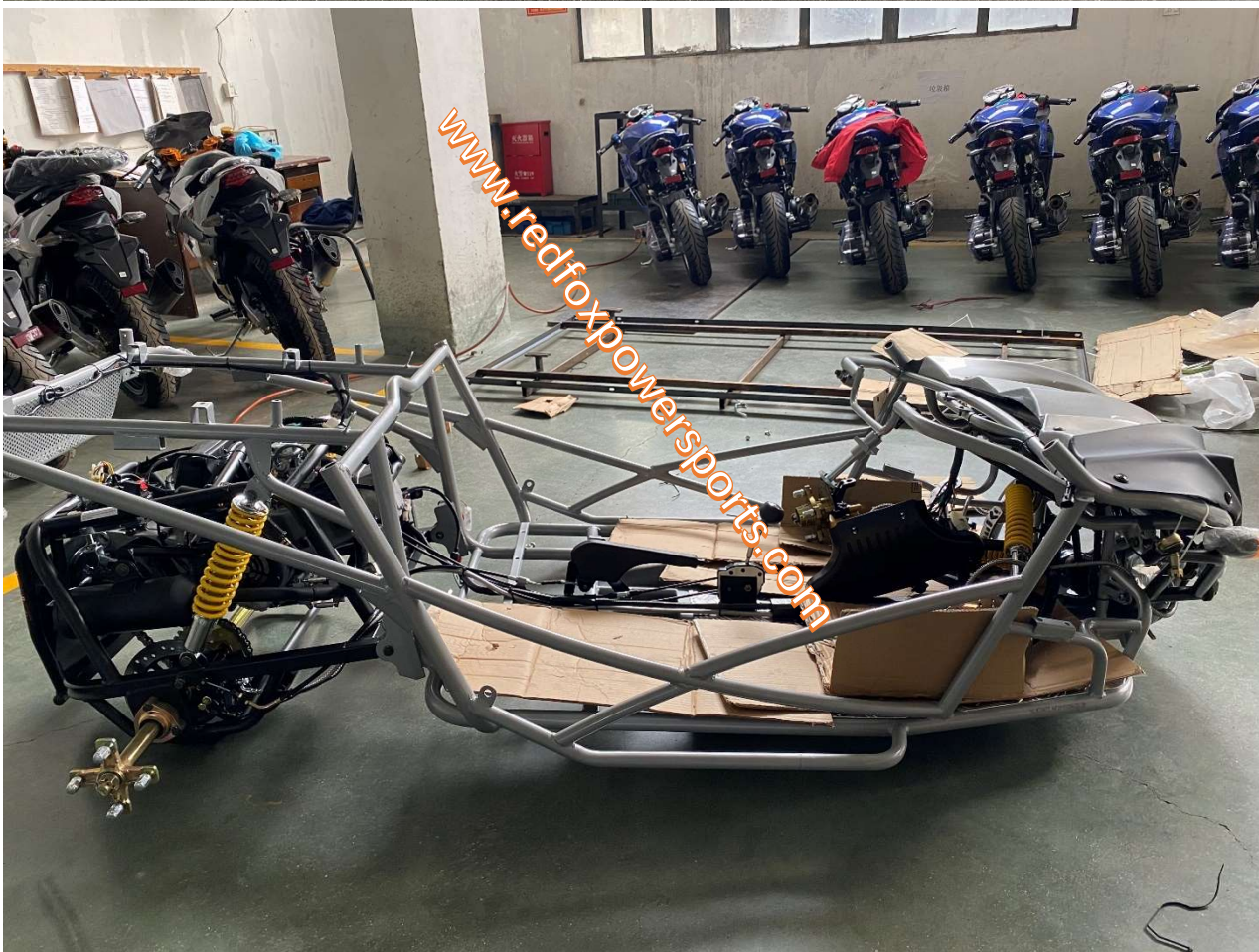
2. Install rear suspension shock



3. Layout all parts for installation







4. Install front A-arm, tie rod and suspension shock

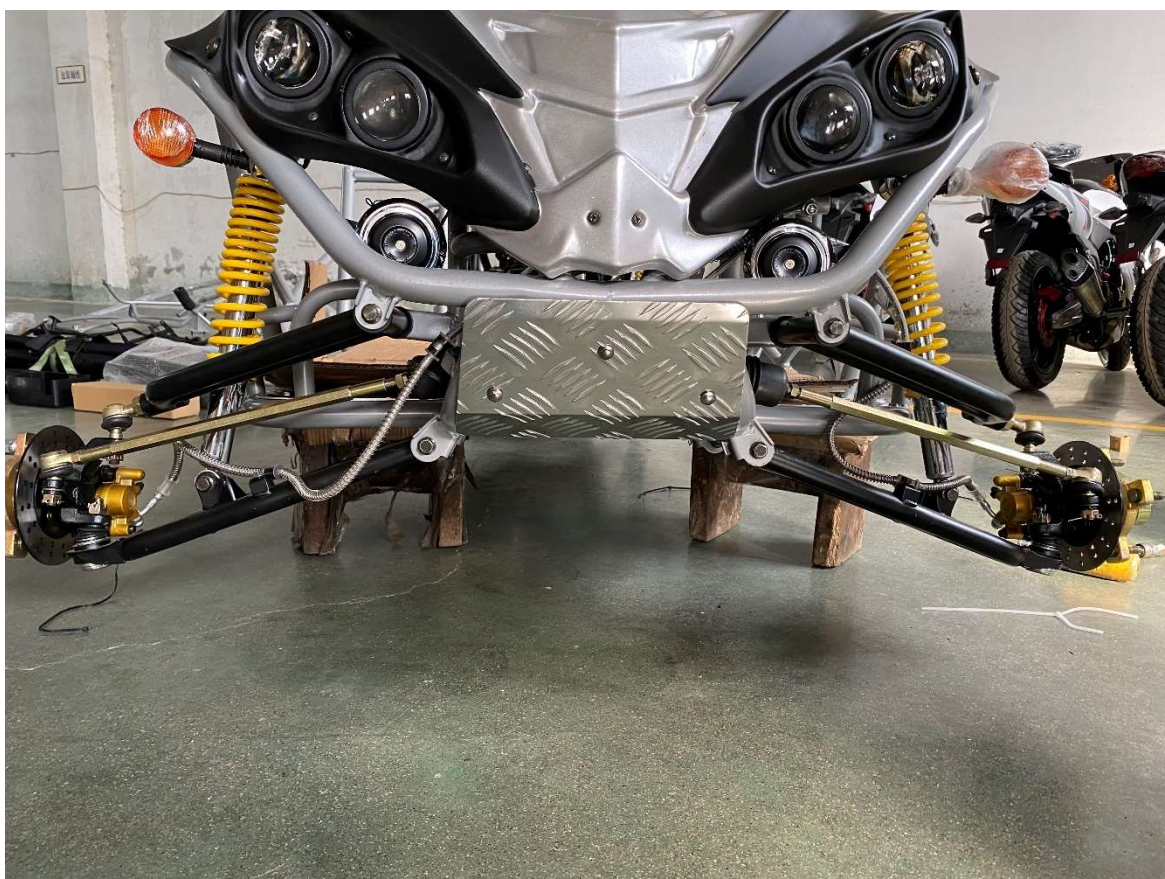












5. Install front and rear wheel

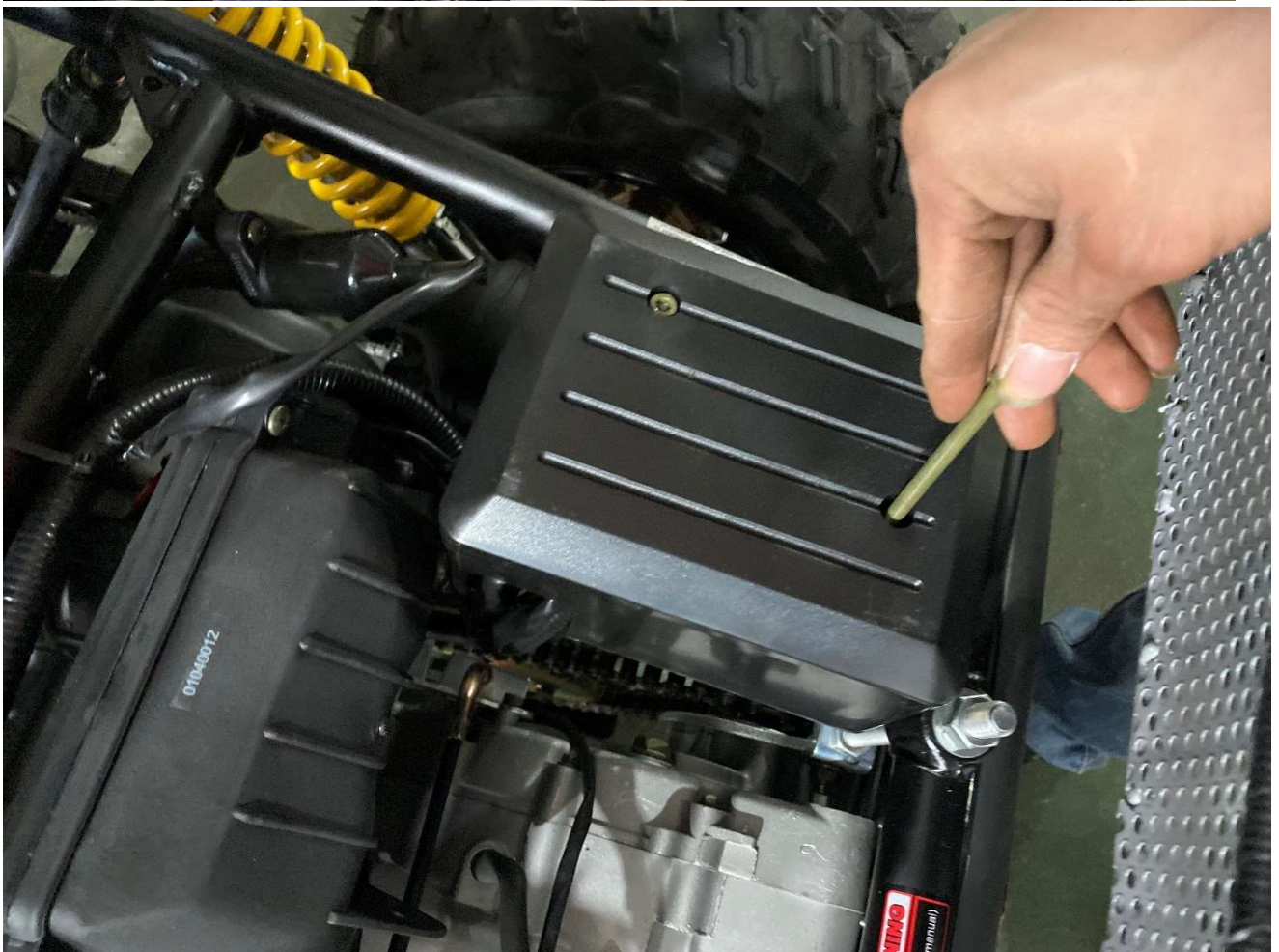
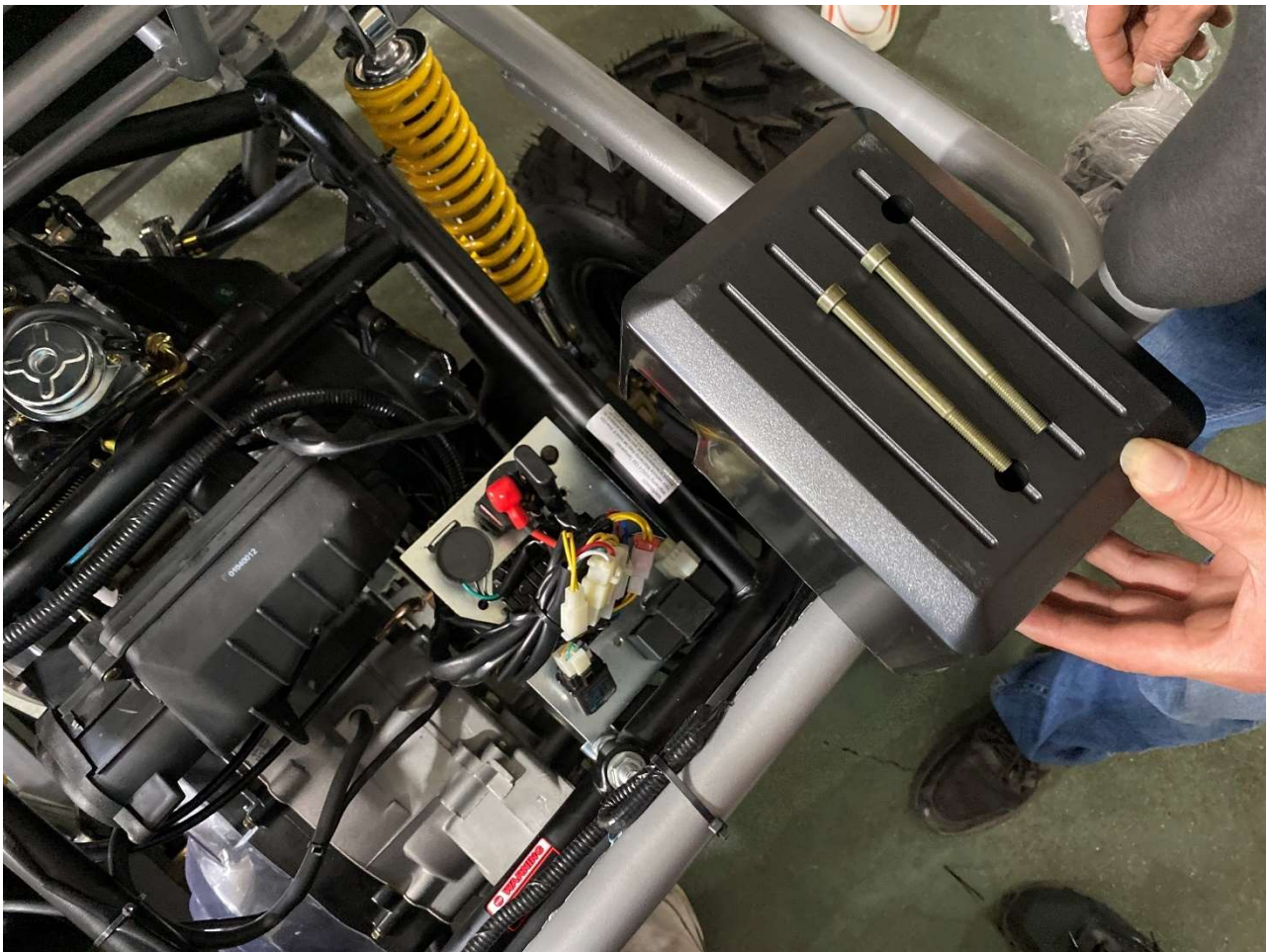


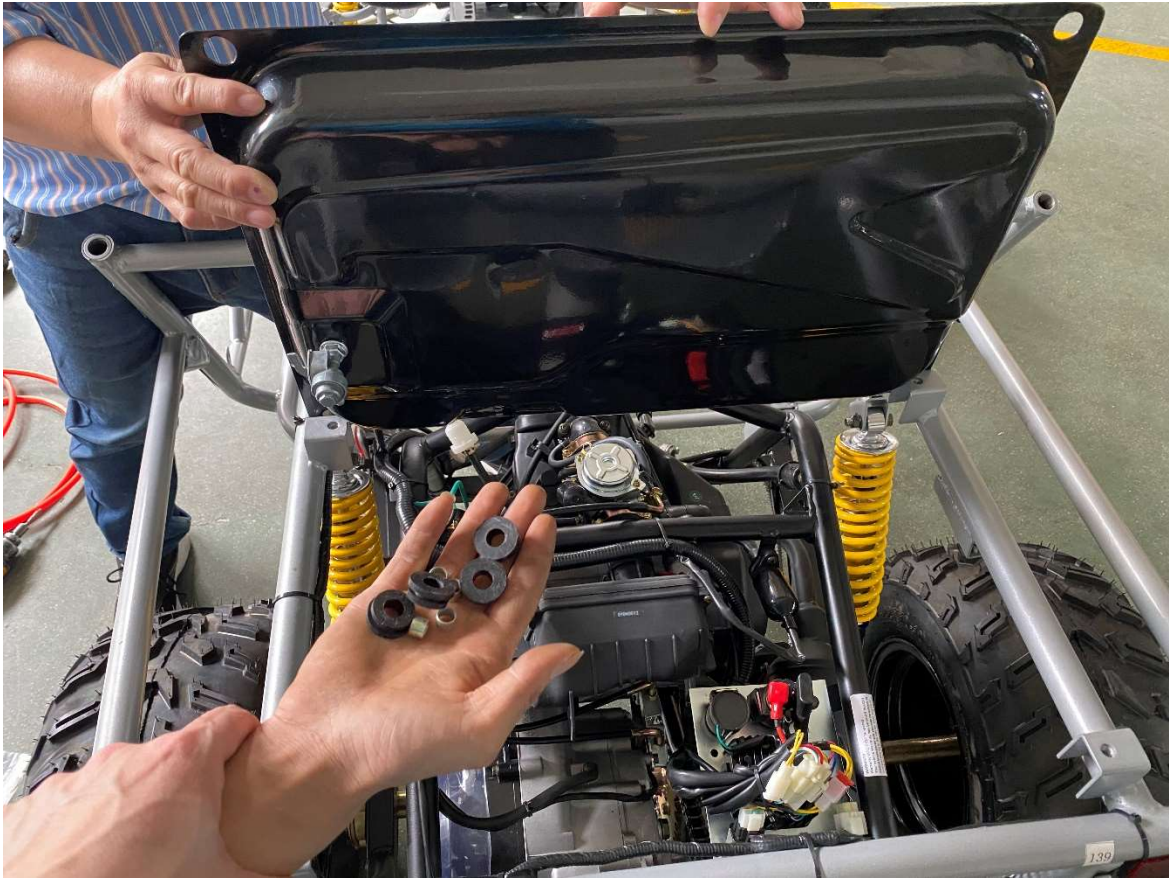
6. Install steering wheel



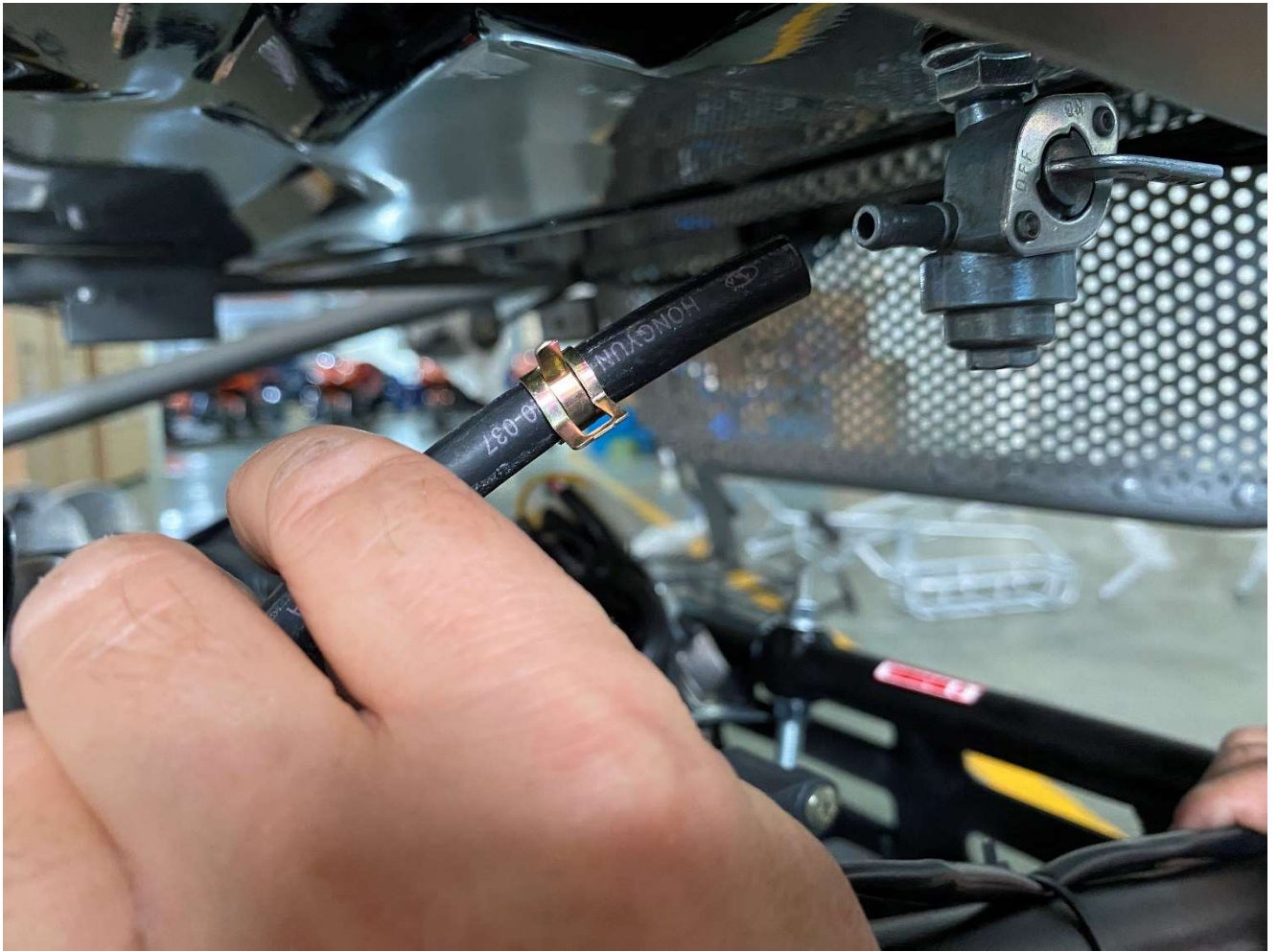


7. Install Engine electric wire cover box and gas tank

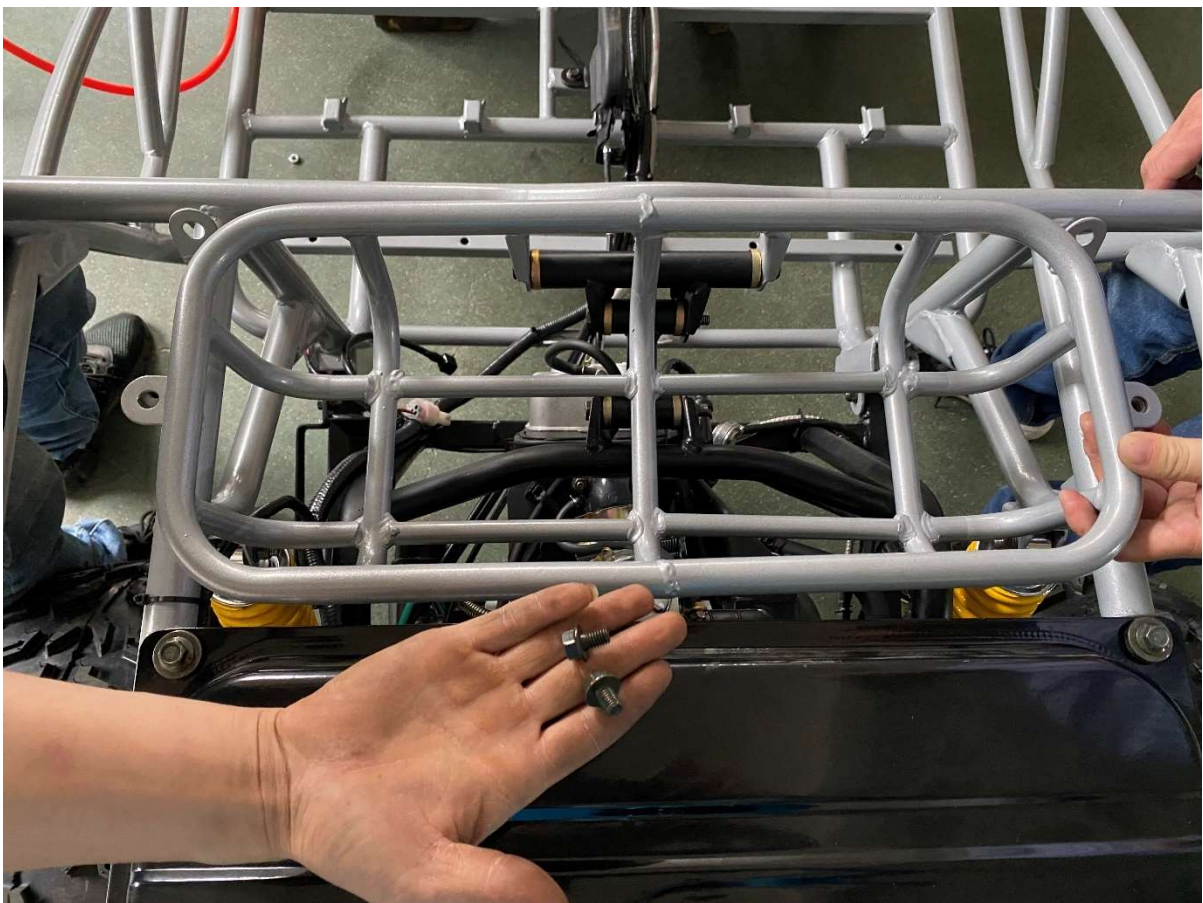




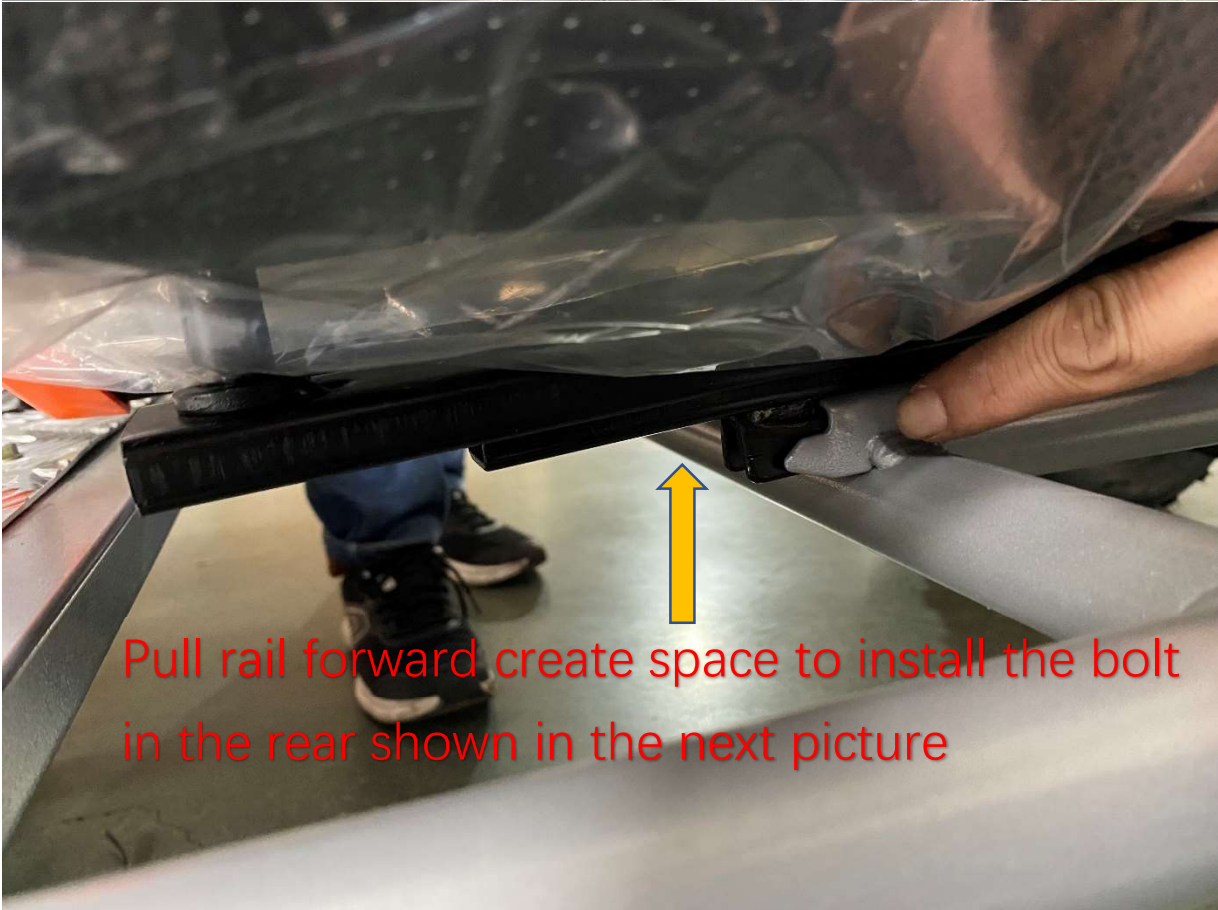




8. Install Rear frame linkage and rear luggage carrier



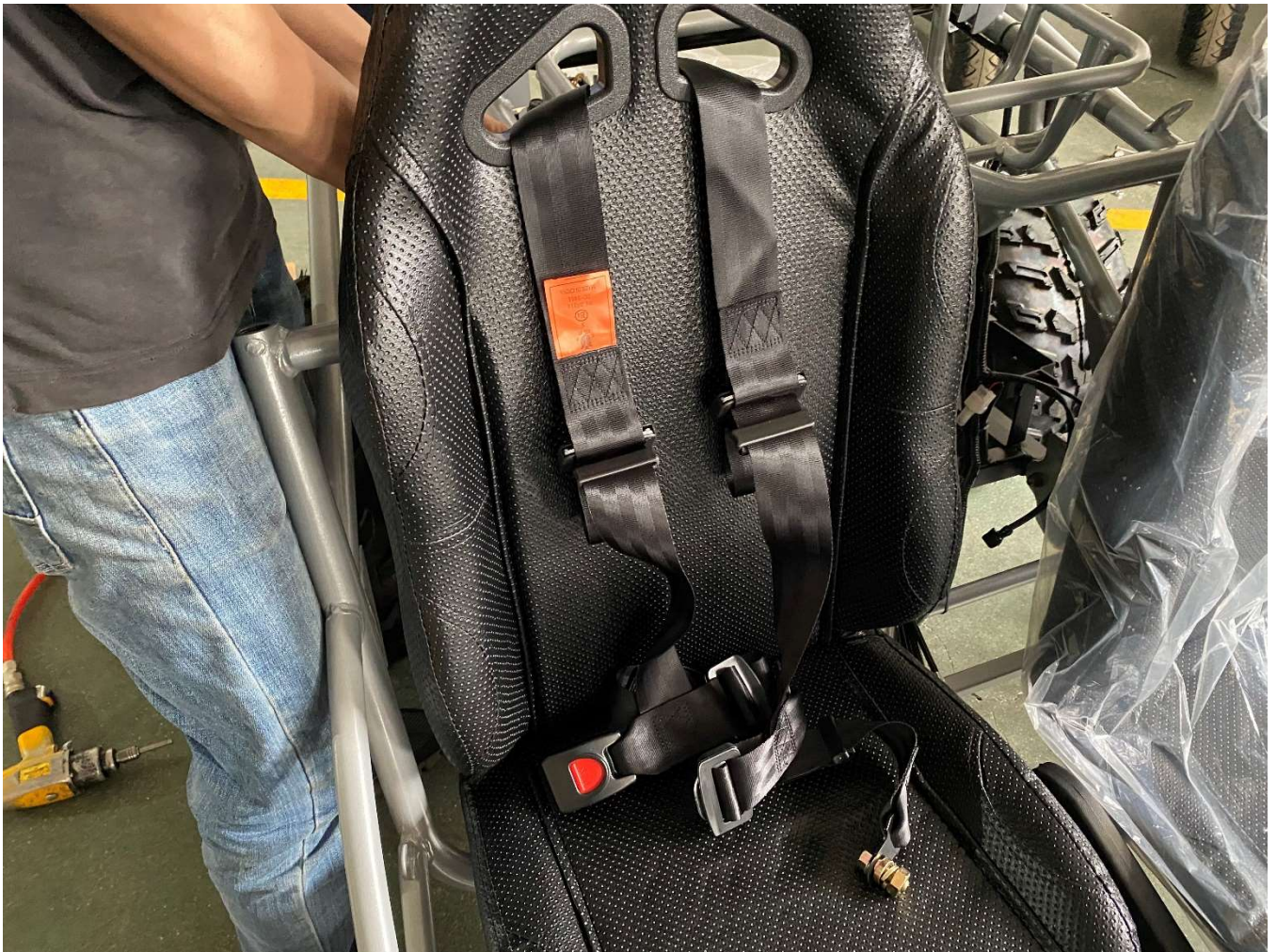
9. Install Driver seat, seat belt and seat rail



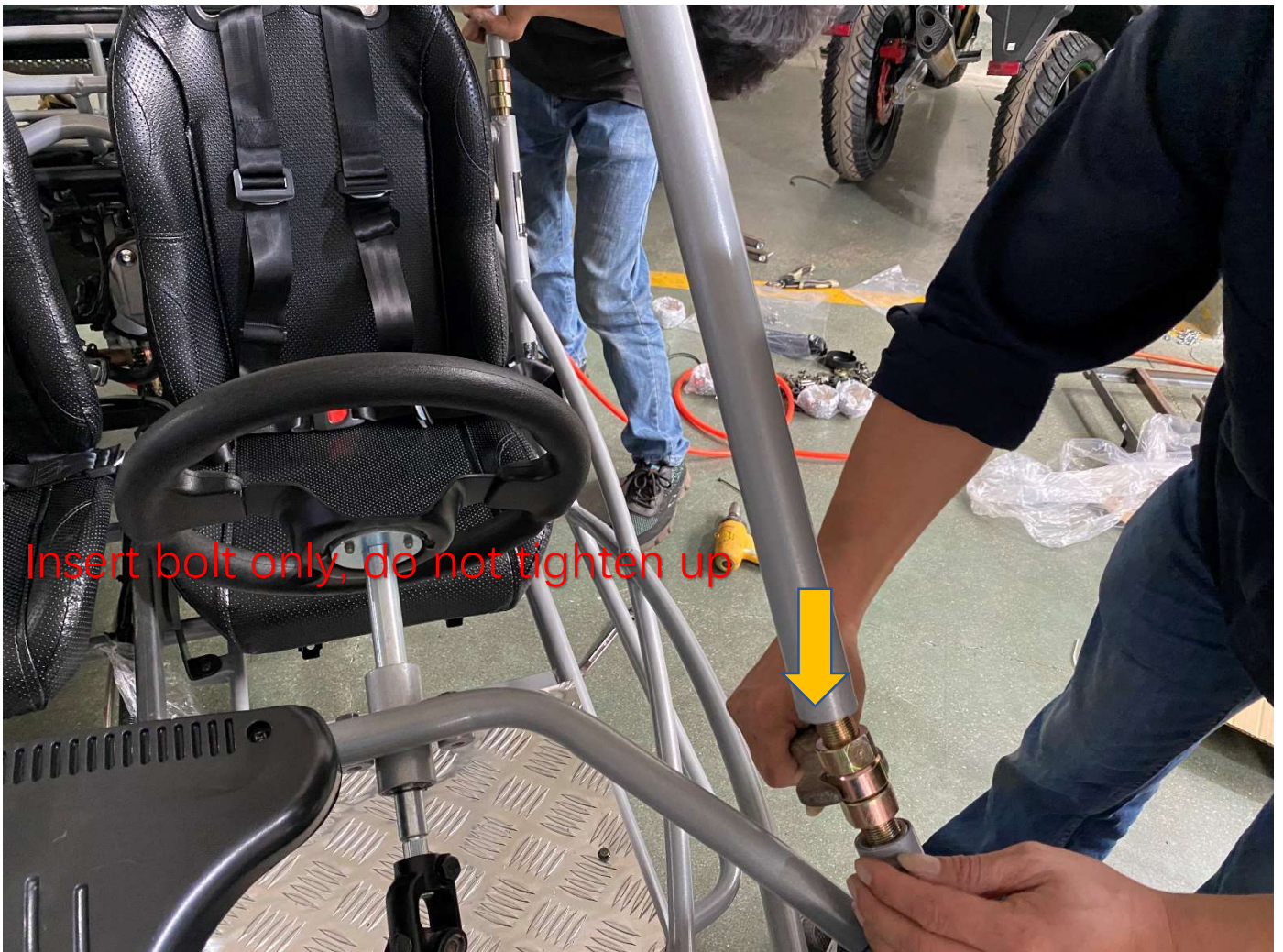




10. Install Passenger seat, seat belt



11. Install upper roll cages

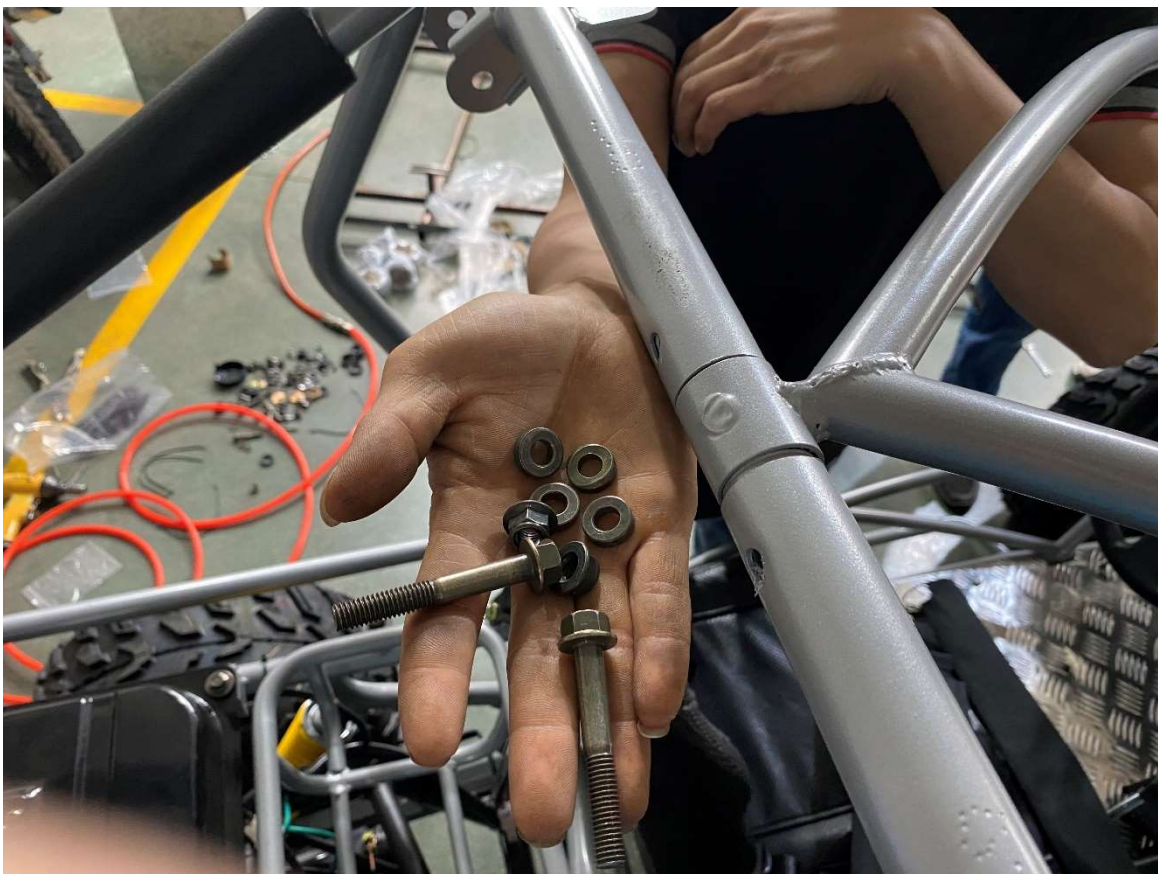


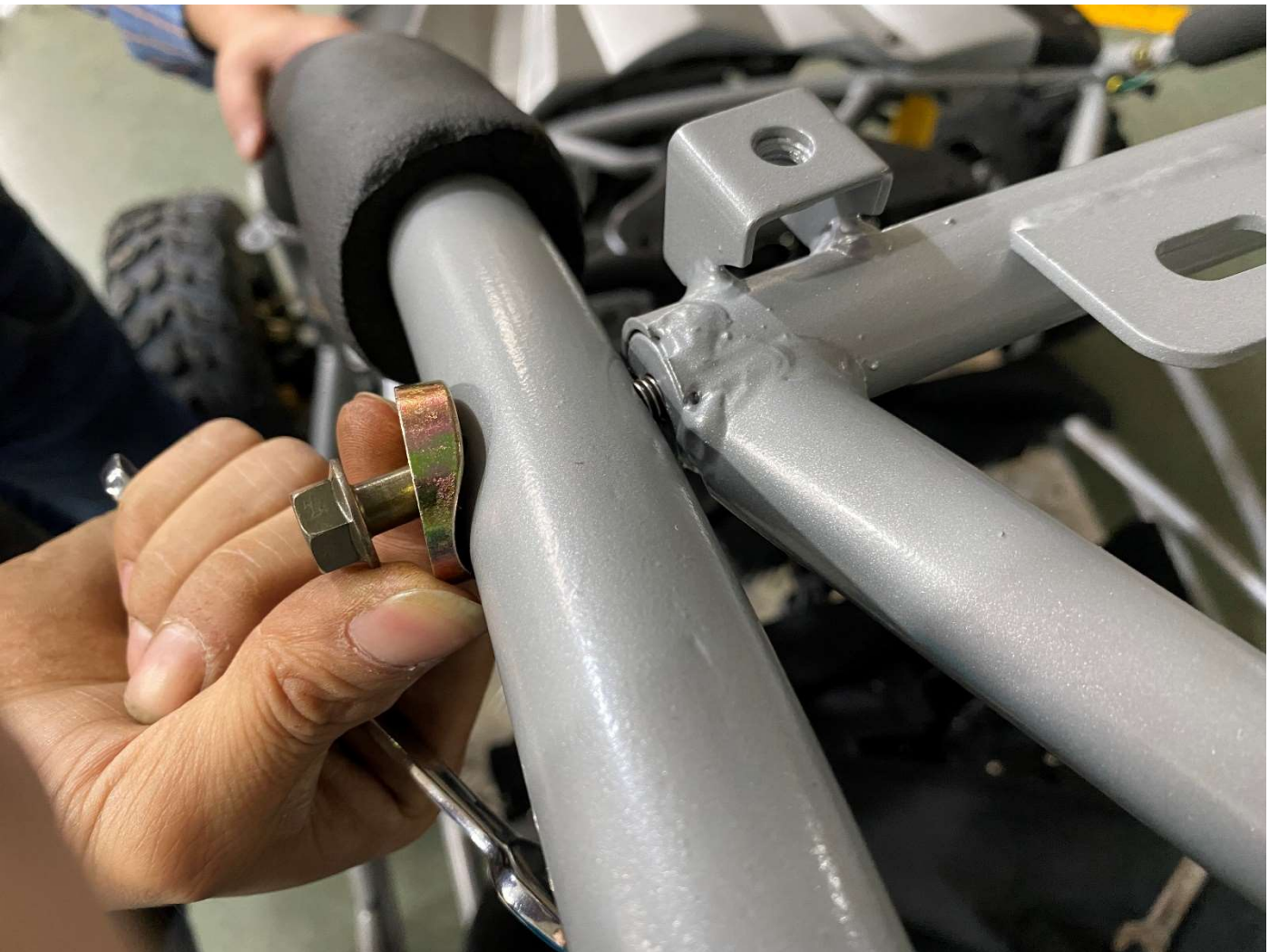
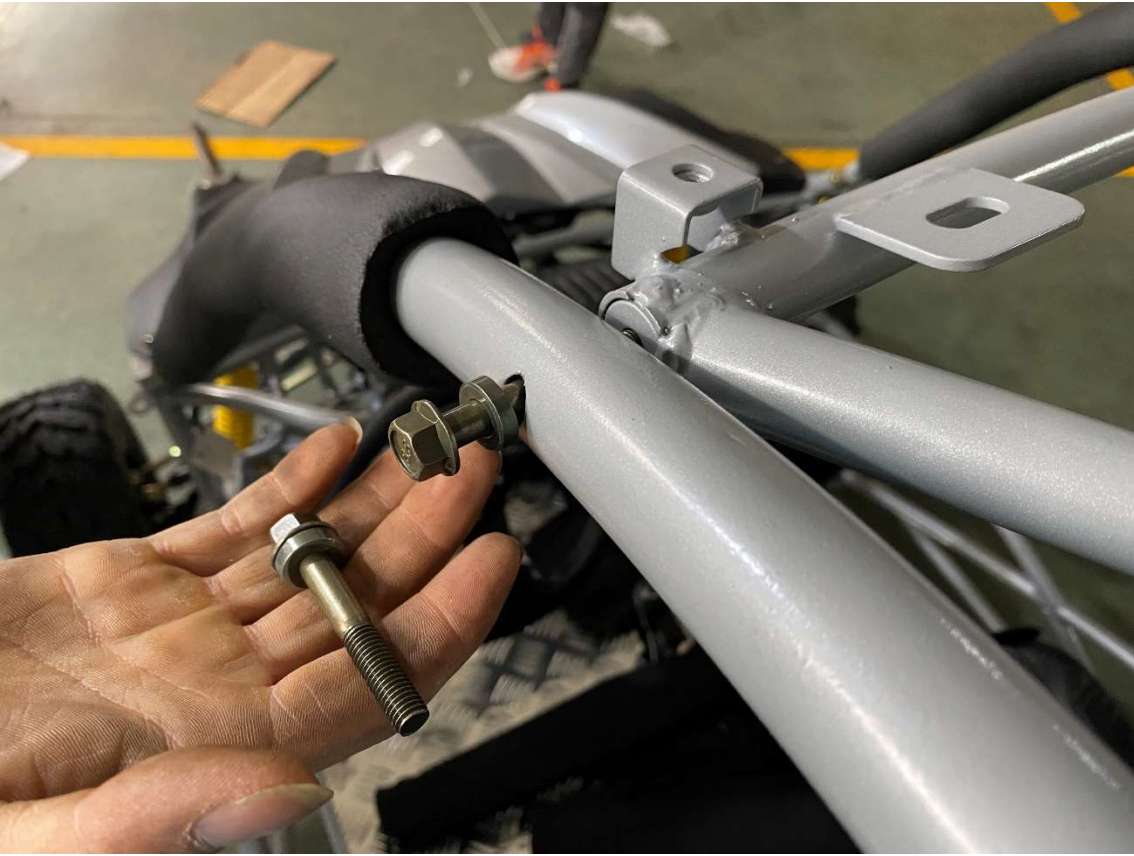


Insert bolt only, do not tighten up

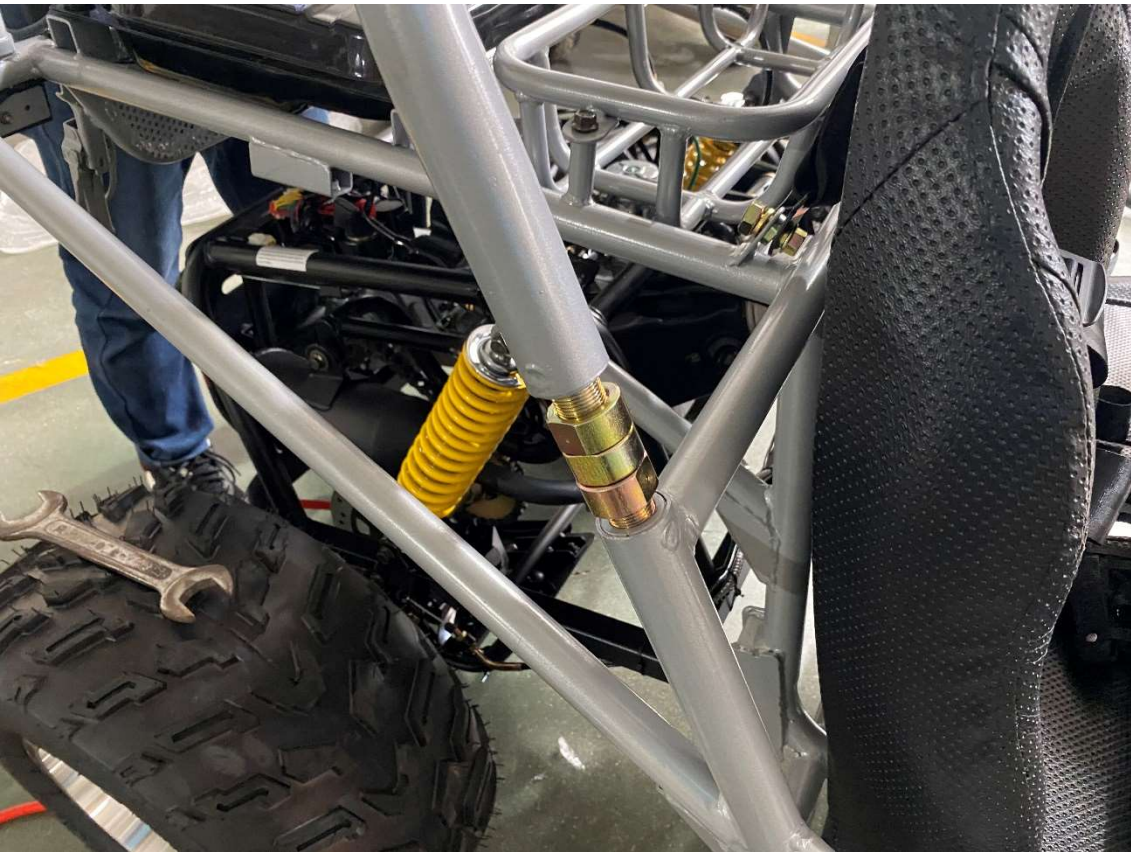


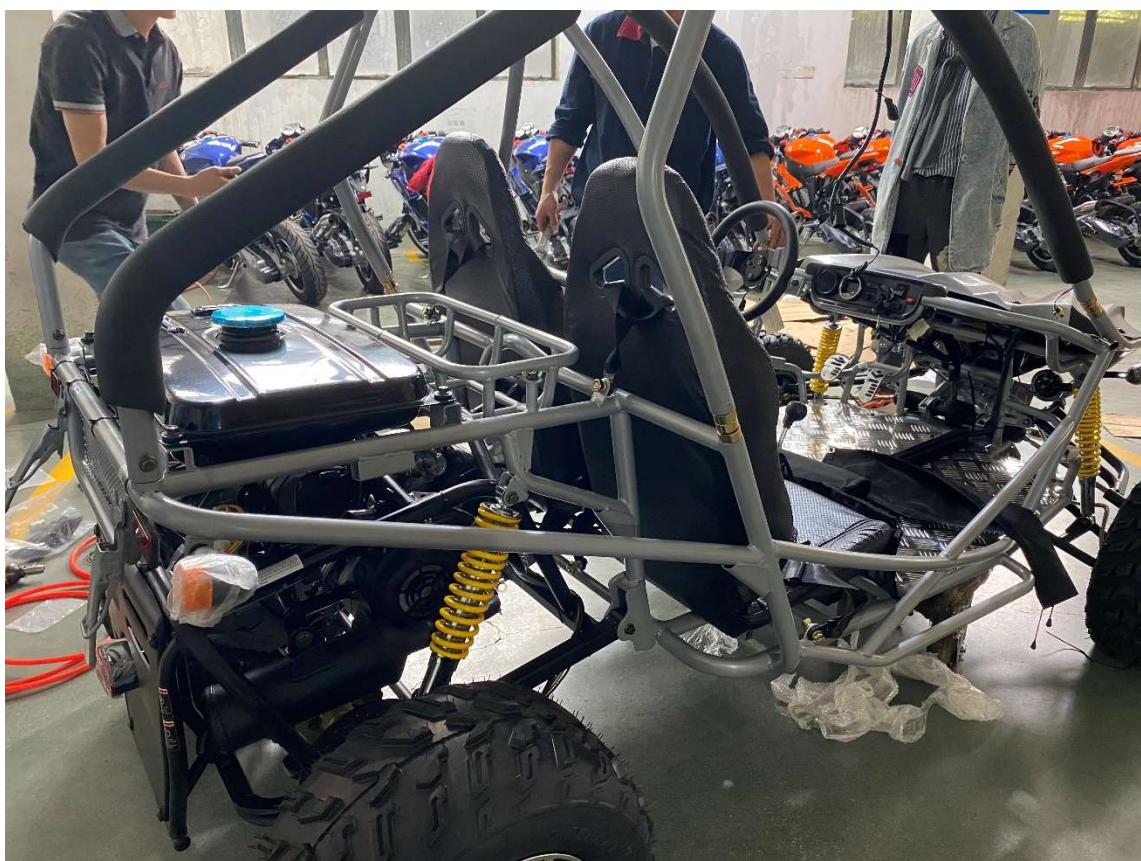
Ok to leave this way, once you tighten up the bolts in the front, this hole will line up











12. Install roof



13. Install spotlight



14. Install Spare tire and bracket

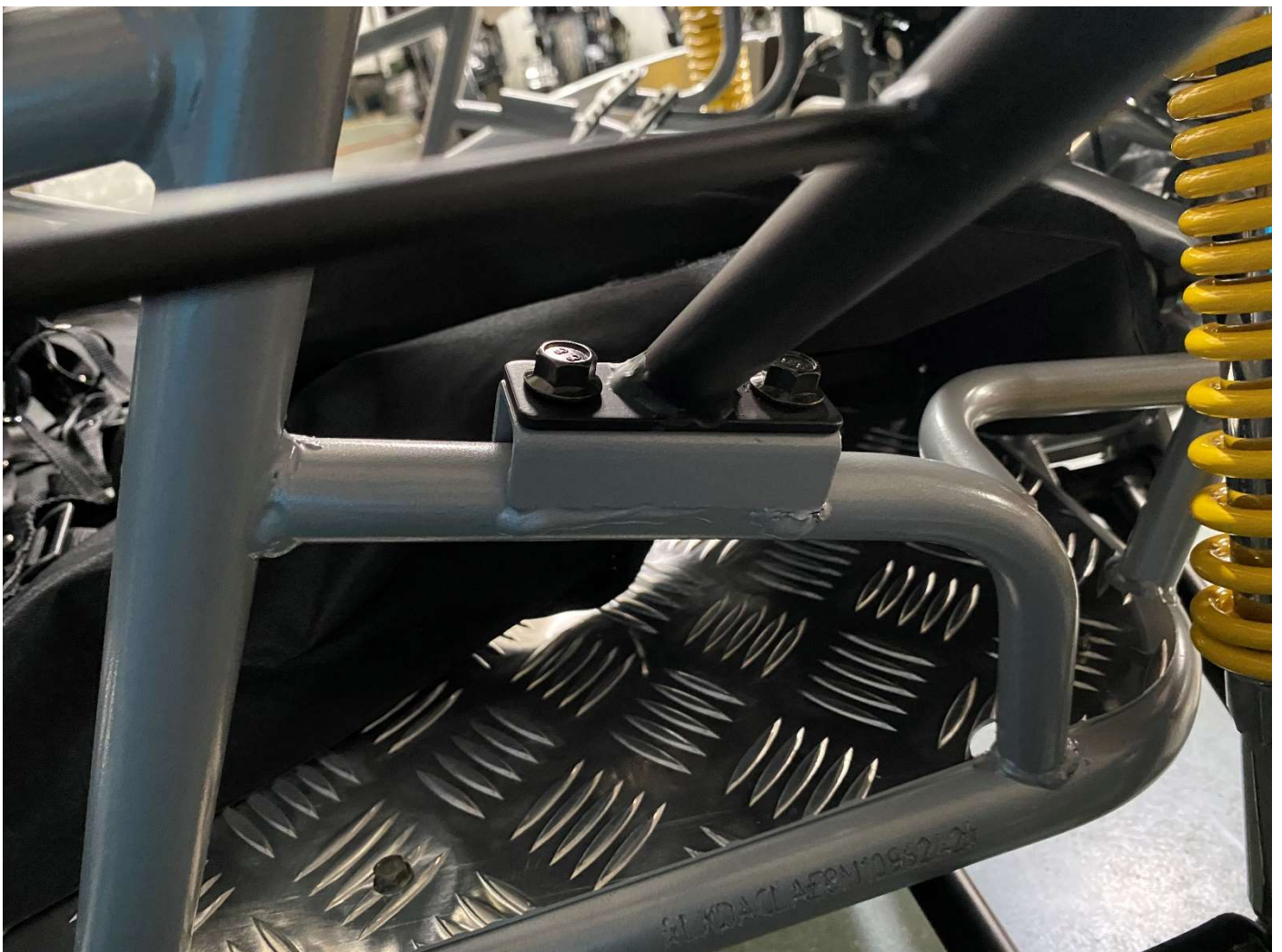




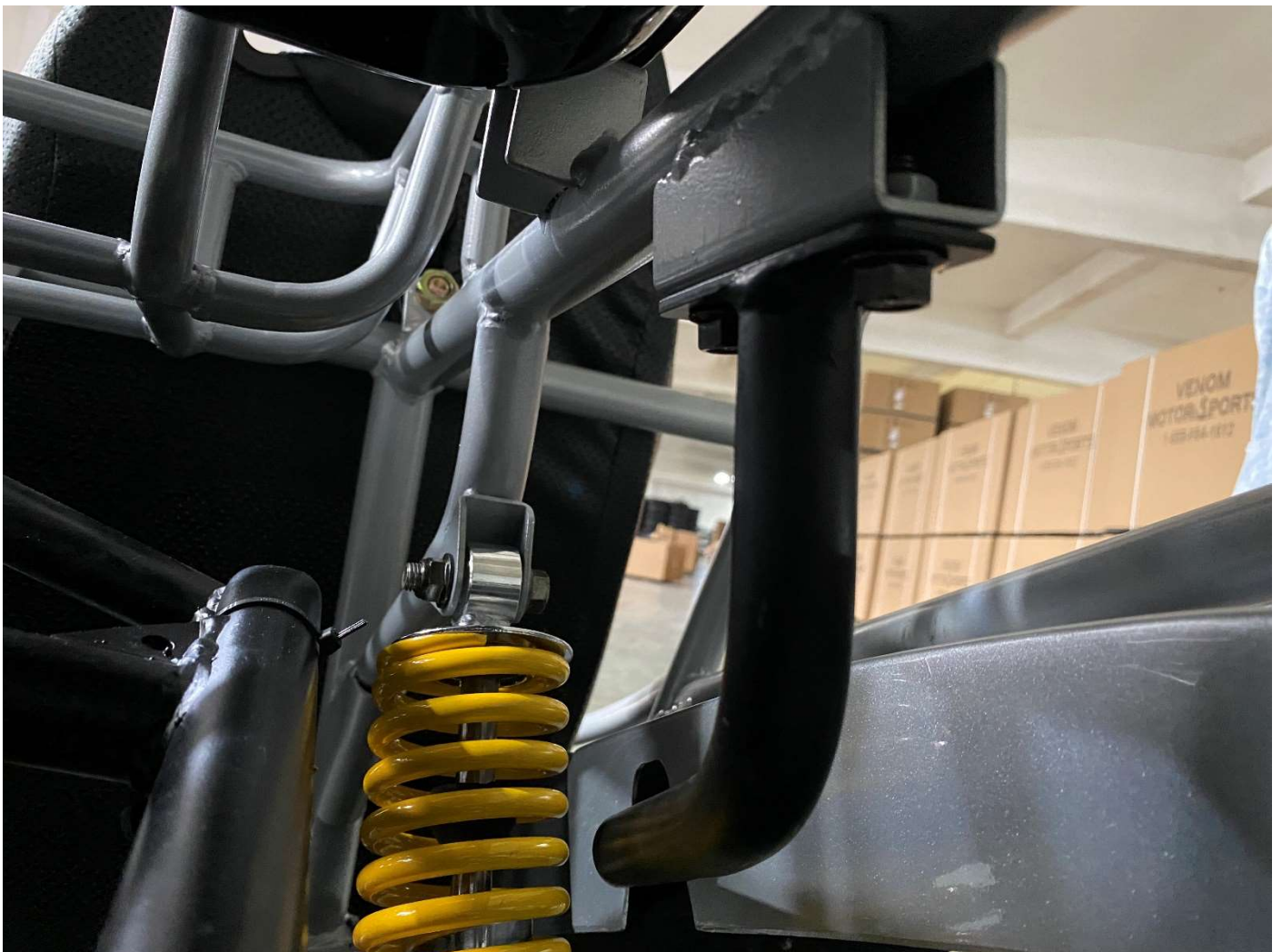




15. Install Front and Rear Fender and bracket









16 Install Rear Net, Battery and Rear-View Mirror

