

# DF200GVA零件目录图册

## DF200GVA PARTSLIST



### FOREWORD

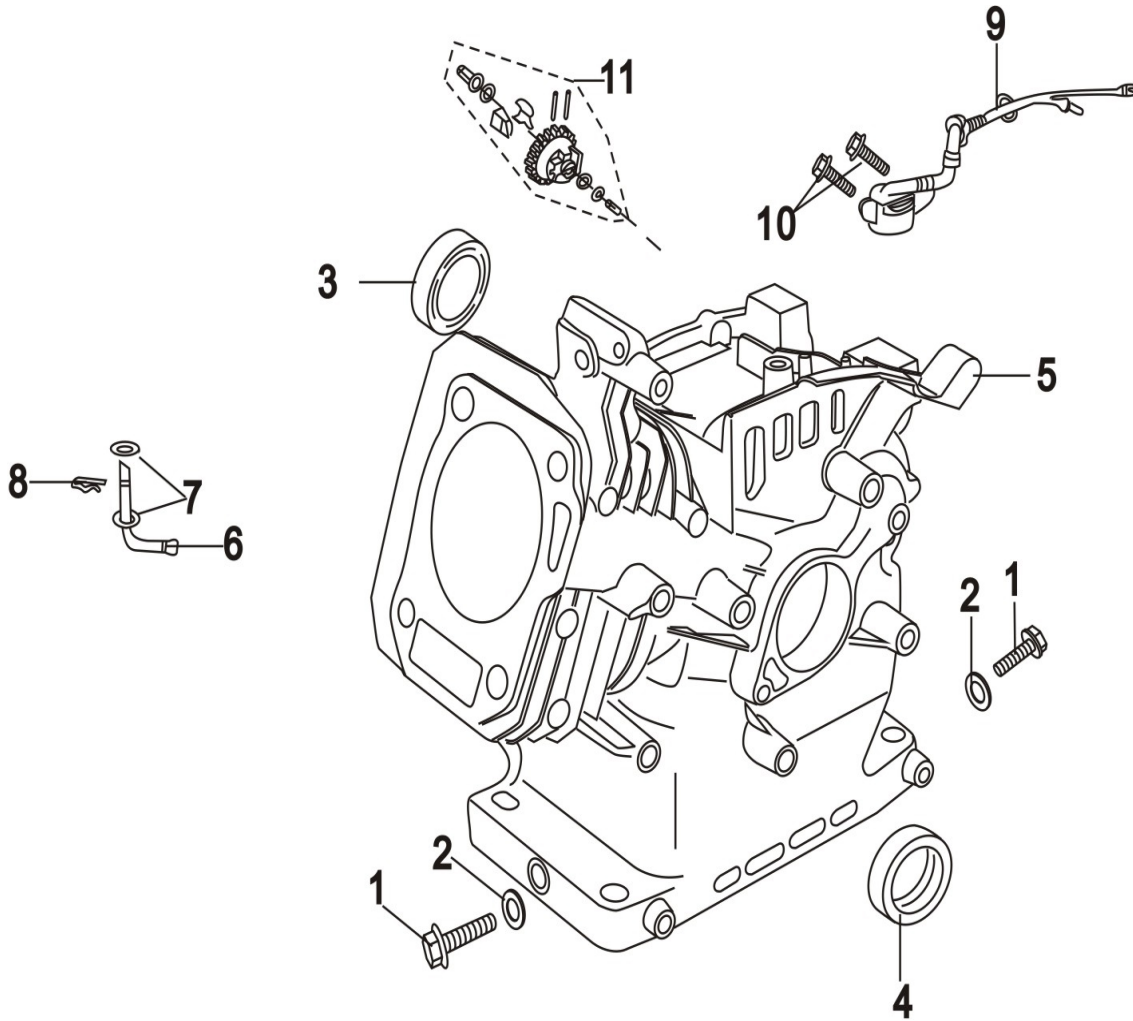
When you are going to order parts you may take this booklet as reference but any differences please take the reality on vehicle as standard.

To find out the name, Item code or fitment you may check in the illustration with the size and appearance .Then with the no. in the illustration you will find out the name, item code and quantity.

There will no notice to you ahead of any change of the information in this booklet.



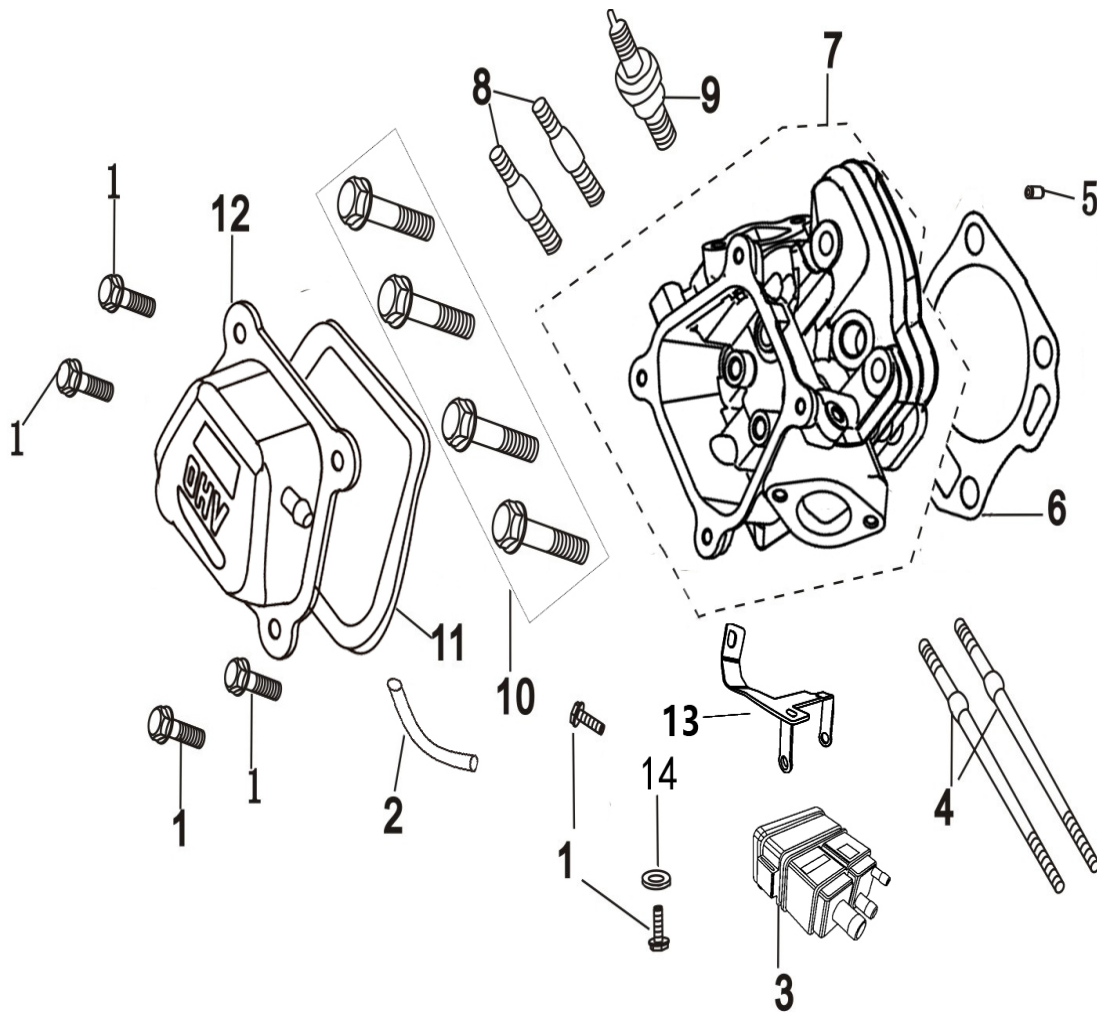
## E-1 曲轴箱组合 CRANKCASE ASSY



序	件号	中文名称	英文名称	数量单价 (Unit Price)		
				Q'ty	¥	\$
	Code name	Chinese	Description			
1	11115-A0710-0001	放油螺塞	Drain plug	2		
2	11116-A0710-0001	放油螺塞垫圈	Washer	2		
3	T910-0081	轴承6205	Bearing 6205	1		
4	111120-A0710-0001	曲轴油封	Oil seal, crankshaft	1		
5	11110-A0720-0021	曲轴箱组合	Crankcase	1		
6	26111-A0710-0001	调速摆杆	Regulating sway bar	1		
7	26113-A0710-0001	调速摆杆垫片	Washer	2		
8	26112-A0710-0001	调速摆杆锁夹	Split pin	1		
11	25100-A0710-0004	调速从动齿轮组件	Driven gear assy, regulator	1		



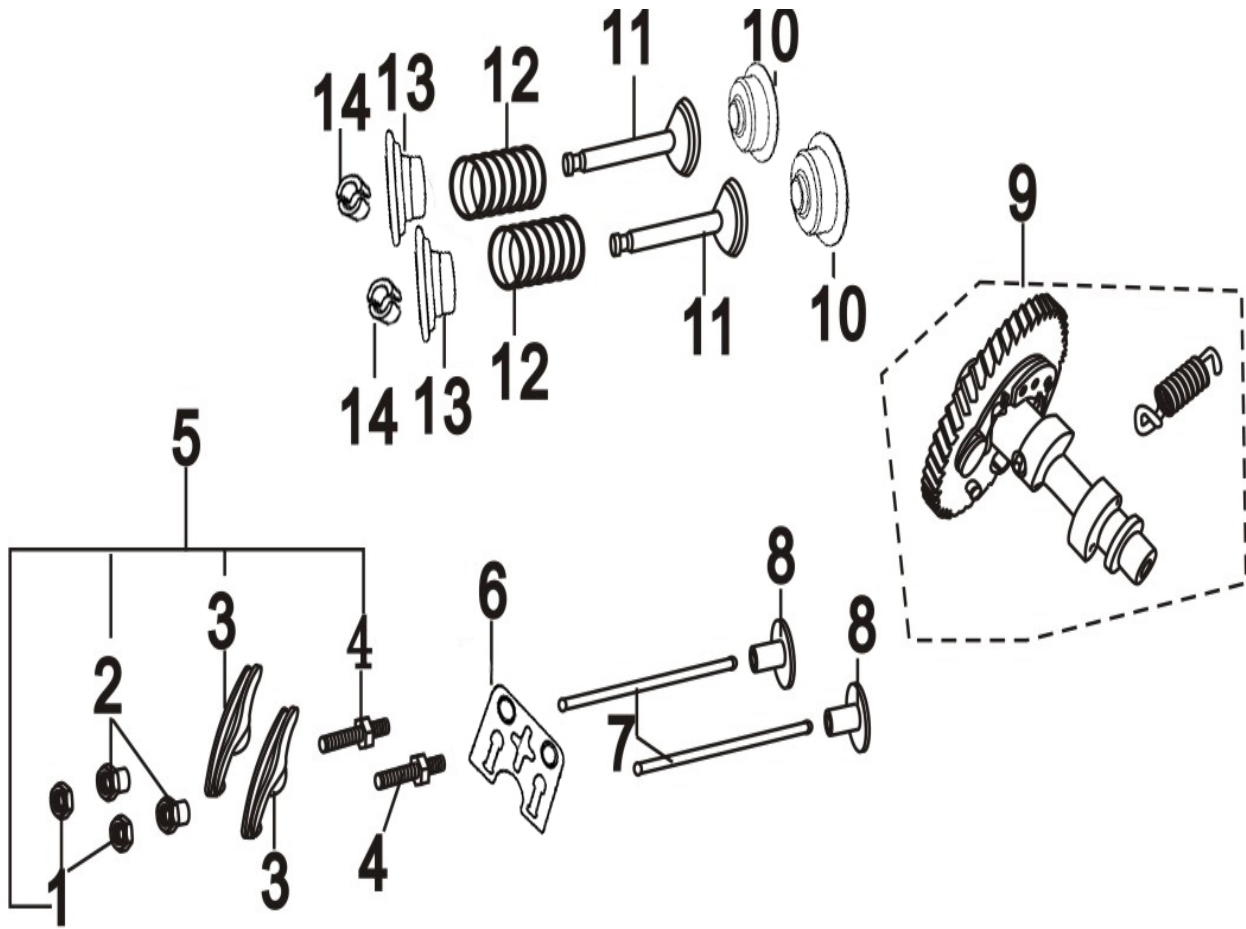
E-3 气缸头 气缸头盖总成 CYLINDER HEAD & CYLINDER HEAD COVER ASSY



序	件号	中文名称	英文名称	数量 单价 (Unit Price)		
				Q'ty	¥	\$
	Code name	Chinese	Description			
1	T152-0019	螺栓M6×12	Bolt M6×12	6		
2	19143-A0710-0001	废气管	Air duck	1		
3						
4	17218-A2013-0001	进气口双头螺栓M6×113	Stud M6×109	2		
5	12117-A0710-0001	气缸头定位销φ10×16	Set pin φ 10×16	2		
6	12120-A0720-0001	气缸头密封垫	Gasket, cylinder head	1		
7	12100-A0720-0007	气缸头组合	Cylinder head Assy	1		
8	18214-A0710-0001	排气口双头螺栓M8×34	Stud M8×34	2		
9	27100-A0710-0001	火花塞F6TC	Spark plug F6TC	1		
10	12118-A0710-0001	气缸头螺栓	Bolt	4		
11	12212-A0710-0001	气缸头盖密封圈	Gasket, cylinder head cover	1		
12	12200-A0730-0001	气缸头盖组合	Cylinder head cover Assy	1		
13						
14						



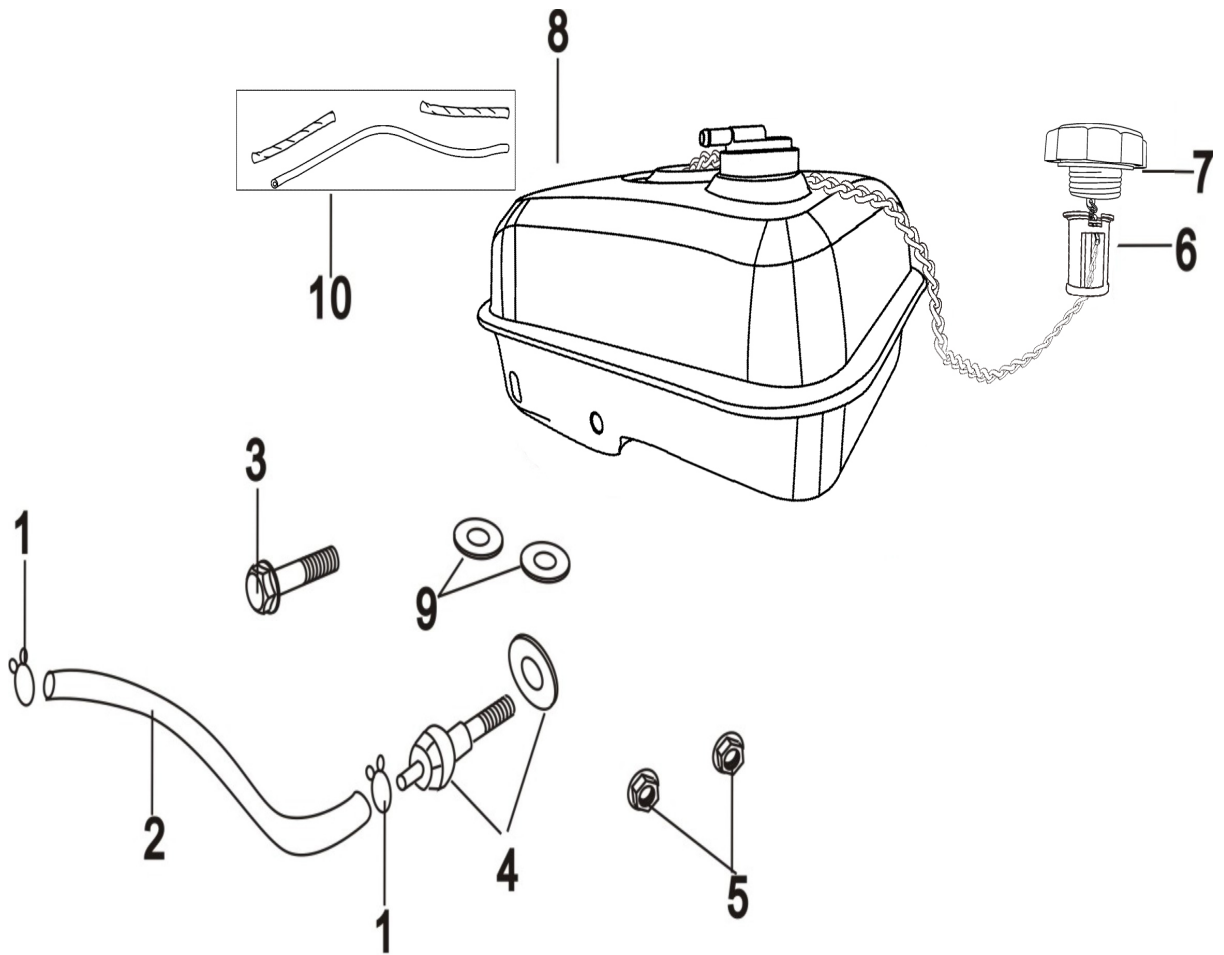
E-5 凸轮轴组合 气门摇臂组合 COMBINATION OF CAMSHAFT & VALVE ROCKER



序	件号 Code name	中文名称 Chinese	英文名称 Description	数量 单价 (Unit Price)		
				Q'ty	¥	\$
1	14314-A0710-	气门间隙调节螺母	Lock nut	2		
2	14312-A0710-	摇臂轴座销	Sleeve	2		
3	14310-A0710-	气门摇臂	Valve rocker	2		
4	14415-A0710-	气门间隙调节螺栓	Adjusting bolt for valve gap	2		
5	14310-A0710-	气门摇臂装配组合	Valve rocker assy	2		
6	14220-A0710-	推杆导架	Pusher guide	1		
7	14210-A0710-	推杆组件	Pusher	2		
8	14315-A0720-	挺柱	Tappet	2		
9	14100-A0720-	凸轮轴装配组合	Camshaft Assy	1		
10	14420-B9130-	挡油罩组件	Oil Shield Assembly	2		
11	14411-A0720-	进气门	Intake Valve	1		
12	14412-A0720-	排气门	Exhaust valve	1		
13	14414-A0710-	气门弹簧	Valve Spring	2		
14	14413-A0720-	气门弹簧座(一)	Valve Spring Seat (1)	2		
15	14418-A0720-	气门锁夹	Valve Lock Clamp	4		



## E-7 燃油箱组成 FUEL TANK ASSY



序	件号	中文名称	英文名称	单价 (Unit Price)		
				数量	¥	\$
	Code name	Chinese	Description	Q'ty		
1	16622-A0710-0002	油管夹	Pipe clamp	2		
2	16621-A0710-0020	出油管 (一)	Outlet pipe	1		
3	T152-0011	螺栓M6×28	Bolt M6×28	1		
4	16630-A0710-0001	出油接头组件	Connector	1		
5	T314-0001	螺母M6	Nut M6	2		
6	16610-A0710-0004	过滤杯	Filter cup	1		
7	16400-A2130-0003	燃油箱盖组合 (带防脱)	Fuel filler cap with packing ring	1		
8	16510-A0710-0245	燃油箱	Fuel tank	1		
9						
10	11513-A2313-0002	通气管	Vent pipe	1		
11	12158-A0710-0002	隔热套	Insulation sleeve	1		
12	16690-A0710-0001	倾倒阀	Dump valve	1		











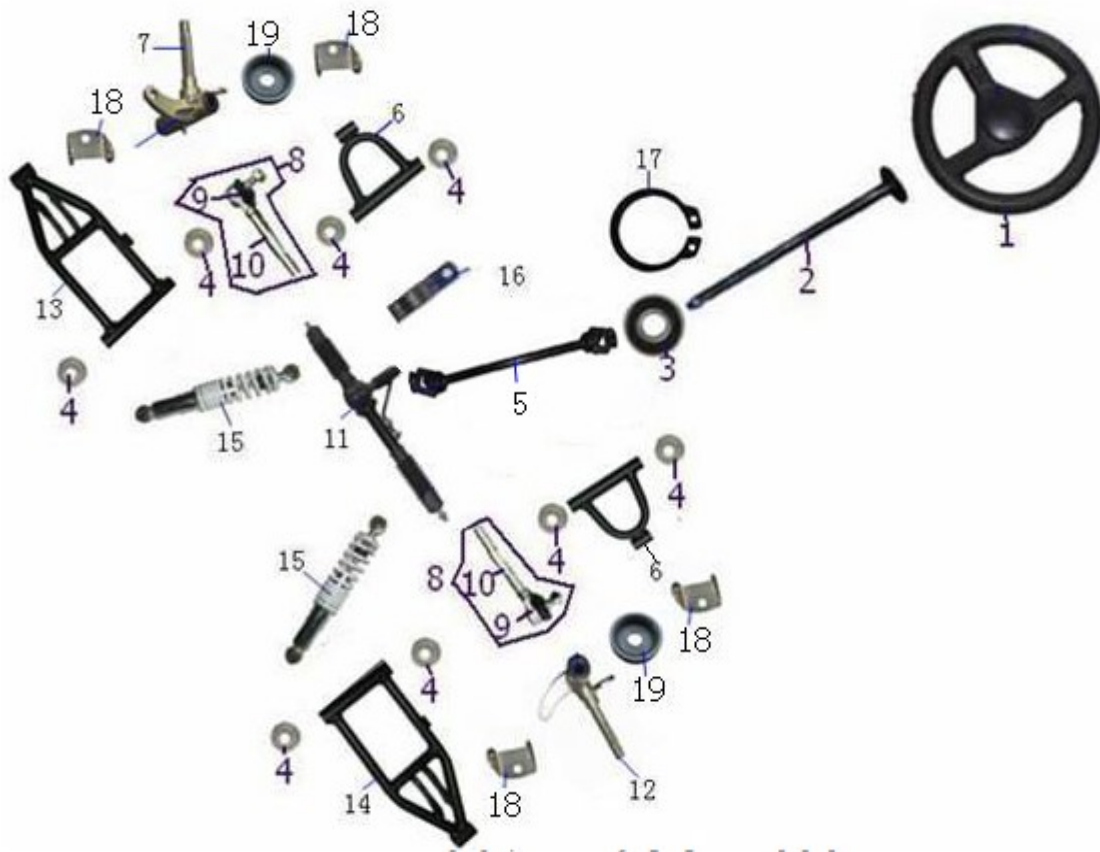








转向系统、前摇臂 Sttering ASSY, Swing arm

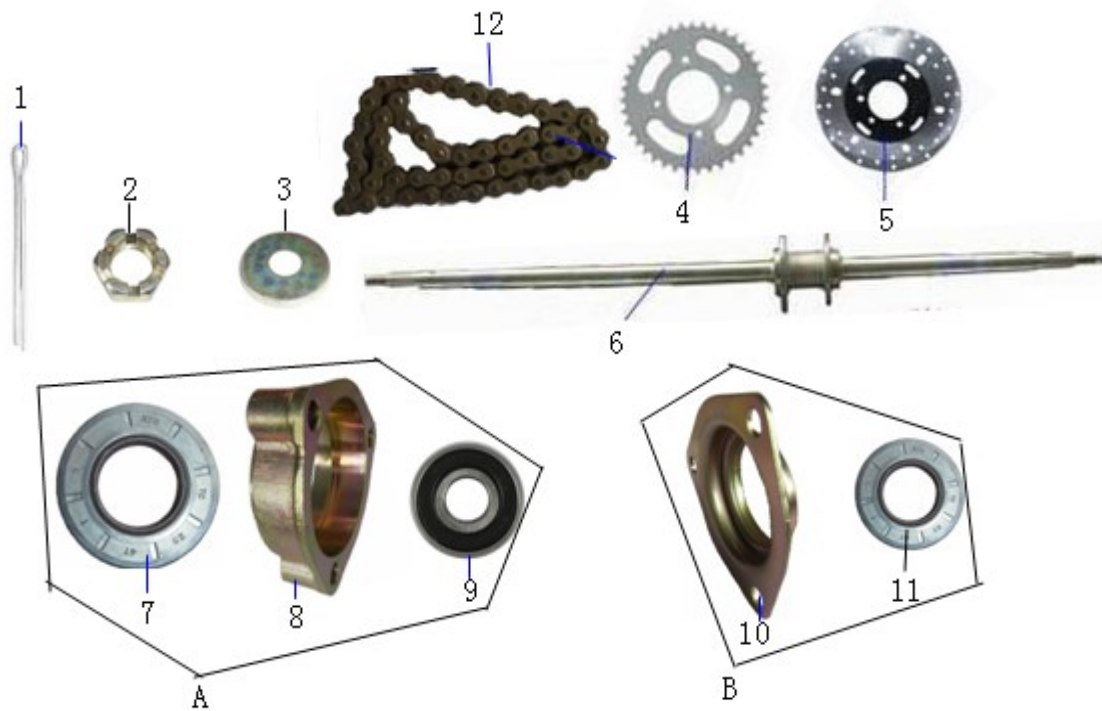


序	件号	中文名称	英文名称	数量	单价	
	Code name	Chinese	Description	Q'ty	¥	\$
1	02030018	方向盘 (小、带盖)	Steering Wheel	1		
2	02030714	方向把固定柱	Steering Wheel Fixture	1		
3	12030021	6903轴承	Bearing (6903)	2		
4	12020008	摇臂全铁防尘盖10*22*6	Steel Dust cover 10*22*6	16		
5	02030023	万向节 125GKA-4004	Gimbal L: 420mm	1		
6	02010052	上摇臂组件	Upper Swing arm	2		
7	02030224	前转角右	Front steering angel (RH)	1		
8	02030222	转向拉杆 (带球头)	Steering rod w/ balljoint	2		
9	12060015	球头	Ball Joint	2		
10	190374	转向拉杆 L:195mm	Steering rod	2		
11	02030022	方向机	Steering machine	1		
12	02030223	前转角左	Front steering angel (RH)	1		
13	02011094	下摇臂组件右	Lower swing arm (RH)	1		
14	02011093	下摇臂组件左	Lower swing arm (LH)	1		
15	07010105	前减震	Front Shock	2		
16	02030015	方向机压板	Steering Machine Cover	2		
17	12050003	轴用卡簧17	Circlip 17	1		
18	02030016	前转向角固定板	Steering angel Fixture	4		
19	12020016	全铁防尘盖	Steel Dust cover 12.5*31*6	4		





## 后传动系统 Rear Transmission



序	件号	中文名称	英文名称	数量	单价	
					¥	\$
	Code name	Chinese	Description	Q'ty		
1		开口销3.0*40	Pin 3.0-40	2		
2		开槽螺母M16	slotted nut M16	2		
3	12020007	轮毂全铁防尘盖	Steel Dust cover	2		
4	02040115	链盘428-43/Φ78-4-Φ	Sprocket	1		
5	04020004	碟刹盘Φ180/Φ66-3	Disc 180 mm	1		
6	02040336	后轴	Rear axle	1		
A	02040170	轴承座组件	Bearing pedestal ASSY	2		
7	12040017	油封40*28*7	Oil Seal 40*28*7	2		
8	02040174	轴承座	Bearing pedestal	2		
9	12030015	轴承6205	Bearing (6205)	2		
B	02040169	轴承座防尘盖组件	dust cover of the bearing	2		
10	02040173	轴承座防尘盖	dust cover of the bearing	2		
11	12040016	油封40*25*7	Oil Seal 40*25*7	2		
12	02040337	链条428-64L	link chain 428-64L	1		







