

DF250RTR 零件目录图册

DF250RTR PARTSLIST



FOREWORD

When you are going to order parts you may take this booklet as reference but any differences please take the reality on vehicle as standard. To find out the name, Item

code or fitment you may check in the illustration with the size and appearance .Then with the no. in the illustration you will find out the name, item code and quantity.

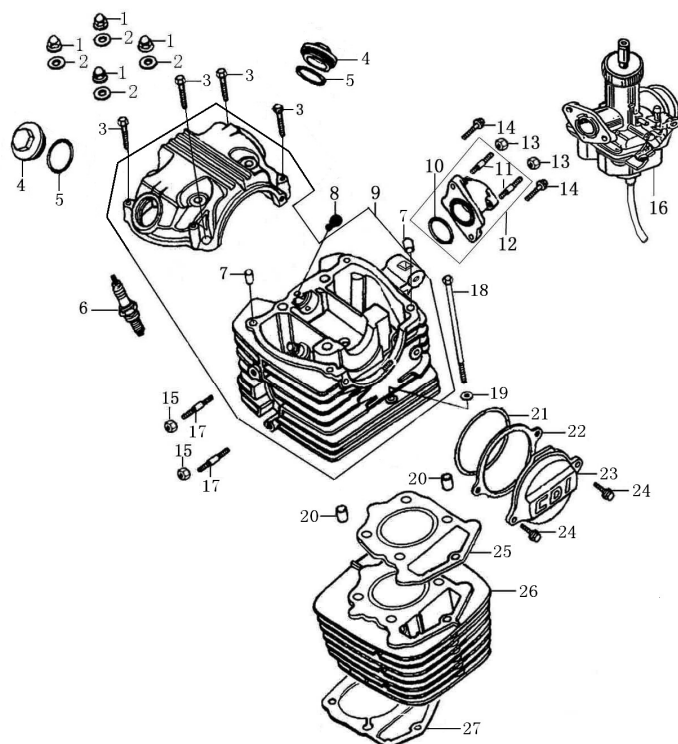
There will no notice to you ahead of any change of the information in this booklet.

发动机 Engine



序 NO.	件号 Code name	中文名称 Chinese	英文名称 Description	数量 Q' ty	单价 ¥ \$	
1	01030008	化油器	Carburetor Assy	1		
2	01010066	发动机	Engine	1		
3	06990001	二级过滤器	Secondary Fiflter	1		
4	06030002	汽油管4.5*8.5	Gasoline Pipe 4.5*8.5	20CM		
5	12010007	油管夹8.5	Oil Tube Clip	4		
6	06990044	废气管	Waste Pipe	1		

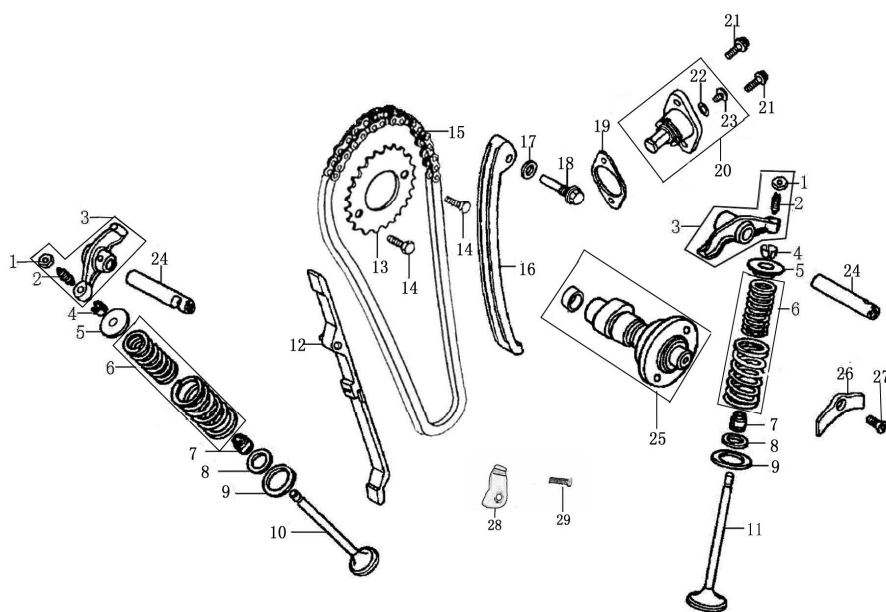
气缸头部件/气缸体部件Cylinder Head ASSY/Cylinder ASSY



序 NO.	件号 Item Code	中文名称 Chinese	英文名称 Description	数量 Q' ty	单价 ¥ \$	
1	91201-I006-00000X	CB125脚缸头盖盖形螺母M8 (白铬)	Cap Nut M8	4		
2	93301-80852018000	CB125盖形螺母铜垫圈8.5×2×18	Cap Nut Copper Washer 8.5×2×18	4		
3	B166740A06003570X	GB16674小盘螺栓M6×35 (兰白锌)	Bolt M6×35	4		
4	11230-I006-00000G	CB125脚气门室盖 (6806)	Cover, Valve Chamber	2		
5	90101-20350000300	CB125气门盖O形圈35×3 (氟硅胶)	Valve Cover O-ring 35×3	2		
6	81300-I006-0000	CB125脚火花塞部件 (CB125脚)	Spark Plug	1		
7	91521-08001400000	70定位销8×14×6.3	Pin 8×14×6.3	2		
8	11015-I006-0000	CB125脚橡胶油塞	Casing Cap	1		
9	1122B-ME05-000086	CB250D-G气缸头组合 (环保II代 6806)M8/58	Cylinder Head Assy	1		
10	90101-20335000300	CB125进气管O形圈33.5×3 (氟硅胶)	Inlet Pipe O-ring 33.5×3	1		
11	91127-I006-0000	CB125脚进气管双头螺栓 (普通 L:27mm)	Inlet Pipe Stud Bolt	2		
12	15800-L044-0041	CB200进气管组合 (JQ-9XHB)	Inlet Pipe Assy	1		
13	B061700006000090X	GB6170螺母M6 (兰白锌)	Nut M6	2		
14	B057830006002070X	GB5783螺栓M6×20 (兰白锌)	Bolt M6×20	2		
15	B061700008000090X	GB6170螺母M8 (兰白锌)	Nut M8	2		
17	91138-I008-01000X	CG125D缸头排气口双头螺栓M8×38 (兰白锌)	Stud Bolt M8×38	2		
18	B166740A06012570X	GB16674小盘螺栓M6×125 (兰白锌)	Bolt M6×125	1		
19	93301-3062201300B	70缸头盖铁垫圈6.2×2×13 (白锌)	Washer 6.2×2×13	1		
20	91521-10002000000	CG125脚定位销10×20	Pin 10×20	2		
21	90101-20750000265	CB125气缸头左盖O形圈75×2.65 (氟硅胶)	Cylinder Head O-ring 75×2.65	1		
22	90202-I006-0000	CB125脚气缸头左盖密封垫	Cylinder Head Gasket	1		
23	11227-I006-100186	CB125脚气缸头左盖 (老款) CDI 6806	Left Cover of Cylinder Head	1		
24	B166740A06002070X	GB16674小盘螺栓M6×20 (兰白锌)	Bolt M6×20	2		

25	9022B-ME05-0000	CB250D-G气缸头密封垫组合(金属)	Cylinder Head Gasket Assy	1		
26	1110B-ME05-000086	CB250D-G气缸体部件(缸标250 6806)	Cylinder Block Assy	1		
27	90205-J025-0000	CB150D气缸体密封垫	Cylinder Block Gasket Assy	1		

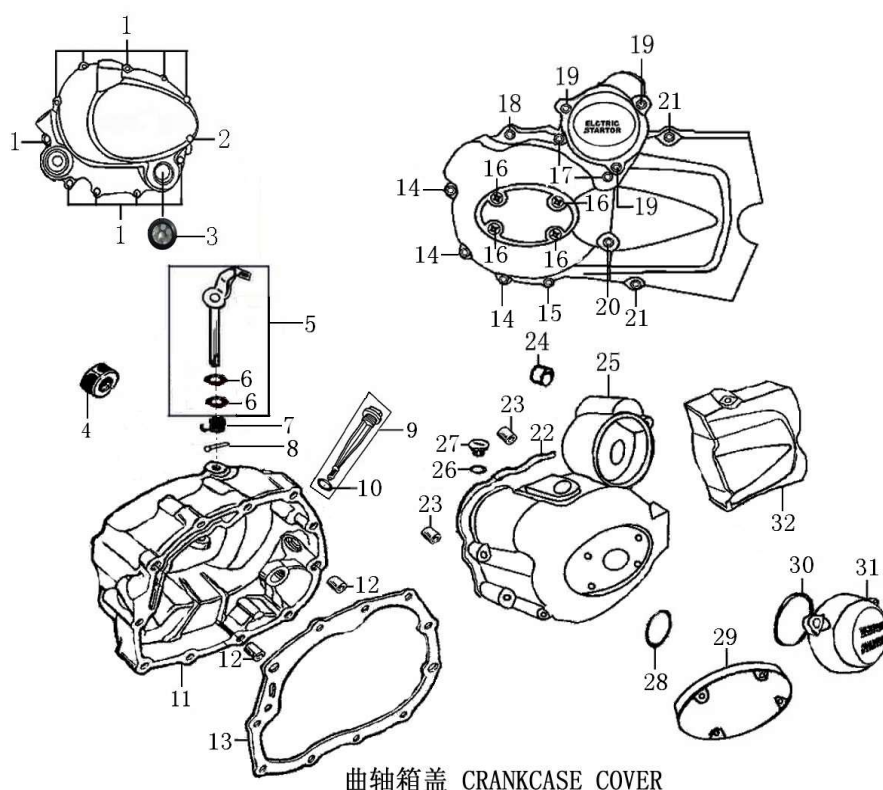
配气机构Camshaft & Valves



序	件号	中文名称	英文名称	数量	单价	
NO.	Item Code	Chinese	Description	Q' ty	¥	\$
1	15403-I006-0000	CB125脚气门间隙调节螺母	Nut, valve Clearance	2		
2	15404-I006-0000	CB125脚气门间隙调节螺钉	Screw, Valve Clearance	2		
3	1540A-I006-0000	CB125脚气门摇臂组合	Rocker Arm ASSY, valve	2		
4	15707-I006-0000	CB125脚气门锁夹	Valve Locker	4		
5	15705-I006-0000	CB125脚气门弹簧座(上)	Spring Seat(upper)	2		
6	15710-I006-0000	CB125脚气门内外弹簧组合	Inner Out Spring Assy	2		
7	1572B-I008-0000	CG125D挡油罩组合	Seal, Valve Stem	2		
8	15708-I008-0000	CG125D气门内弹簧座圈(下)	Spring Seat(lower)	2		
9	15706-I008-0000	CG125D气门外弹簧座圈(下)	Spring Seat(lower)	2		
10	15702-LA74-0000	CB200-C排气门(堆焊合金)	Exhaust Valve	1		
11	15701-LA74-0000	CB200-C进气门	Intake Valve	1		
12	1553A-ME05-0000	CB250D-G链条导向板组合	Chain Guide Plate	1		
13	15301-L044-0000	CB200正时从动链轮(34)	Timing Driven Sprocket	1		
14	B057830006001270B	GB5783螺栓M6×12(白锌)	Bolt M6×12(white zinc)	2		
15	1532B-ME05-0000	CB250D-G正时链条组合(7×104 齿形链)	Sprocket Chain	1		
16	1552A-ME05-0000	CB250D-G链条张紧板组合	Tension Plate ASSY	1		
17	93301-70851514000	70导向销轴铝垫圈8.5×1.5×14	Washer 8.5×1.5×14	1		
18	91109-I006-00000X	CB125脚张紧条芯轴螺栓(白铬)	Tensioner Axle Bolt	1		
19	90211-I049-0000	CB125D张紧器密封垫	Tensioner Gasket	1		
20	1554B-I049-000086	CB125D张紧器组合(6806)	Tensioner Assy	1		
21	B000700106001670X	GB70.1螺钉M6×16(兰白锌)	Bolt M6×16	2		
22	90101-20090000180	CB125张紧器O形圈9×1.8(氟硅胶)	Tensioner O-ring 9×1.8	1		
23	91120-I006-0000	CB125脚张紧调节螺栓M6×10	Tensioner Bolt M6×10	1		
24	15402-I006-0100	CB125脚-2#气门摇臂轴(PDK专用)	Rocker Shaft	2		
25	15100-ME05-0003	CB250D-G凸轮轴部件(TPI轴承)	CB250D-G Cam Shaft Assy	1		
26	11201-I006-0000	CB125脚气门摇臂轴定位板	Rocker Arm Positioning Plate	1		

27	B008190106001620B	GB819.1螺钉M6×16(白锌)	Screw M6×16	1		
28	2143B-L044-0000	CB200链条护板组合	Chain Protect Plate Assy	1		
29	B166740006001670B	GB16674大盘螺栓M6×16(白锌)	Bolt M6×16	1		

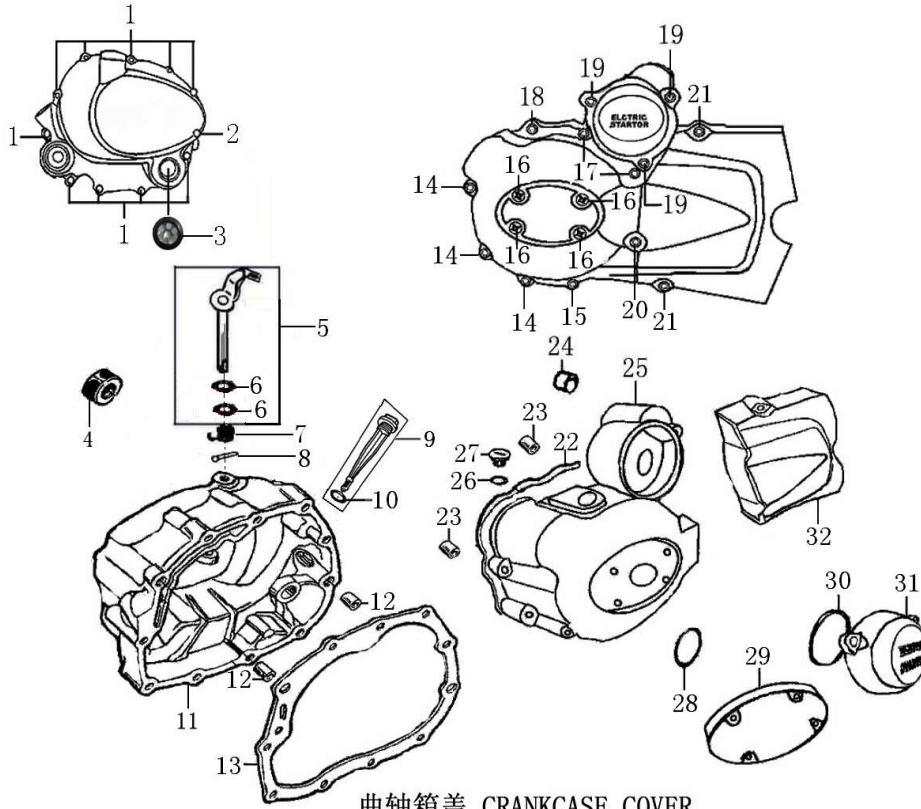
曲轴箱盖 Crankcase Cover 1



序 NO.	件号 Item Code	中文名称 Chinese	英文名称 Description	数量 Q' ty	单价 ¥ \$	
1	B166740A06004070X	GB16674小盘螺栓M6×40(兰白锌)	Bolt M6×40	10		
2	B166740A06005070X	GB16674小盘螺栓M6×50(兰白锌)	Bolt M6×50	1		
3	12426-I008-0000	CG125D机油观察窗	Oil Lelve Sight Window	1		
4	90304-I006-0000	CB125脚启动轴油封16×28×7(丁腈胶)	Oil Seal16×28×7	1		
5	2242A-IA18-01000F	PZ125离合器操纵臂组合	Controlling Arm ASSY,Clutch	1		
6	90101-30087000190	CB125脚操纵臂O形圈8.7×1.9(氟橡胶)	O-ring 8.7×1.9	2		
7	22427-I006-0000	CB125脚离合器操纵臂弹簧	Clutch Controlling Arm Spring	1		
8	B0087901030120000	GB879.1销 3×12	Pin 3×12	1		
9	14301-I006-01000G	CB125脚机油尺组合(白板 镀铬)分体式	Oil Gauge ASSY	1		
10	90101-10180000300	CG125机油尺O形圈18×3(丁腈胶)	Oil Gauge O-ring 18×3	1		
11	12421-I008-660063	CG125D右曲轴箱盖[白板 (超风款) 6805]电感式	Cover COMP. Right Crankcase	1		
12	91521-08001400000	70定位销8×14×6.3	Pin 8×14×6.3	2		
13	90206-I008-0000	CG125D右曲轴箱盖密封垫	Gasket, R.Crankcase Cover	1		
14	B166740A06002570X	GB16674小盘螺栓M6×25(兰白锌)	Bolt M6×25(blue white zinc)	3		
15	B166740A06003570X	GB16674小盘螺栓M6×35(兰白锌)	Bolt M6×35(blue white zinc)	1		
16	B008180006001220X	GB818螺钉M6×12(兰白锌)	Bolt M6×12(blue white zinc)	4		
17	B166740A06005570X	GB16674小盘螺栓M6×55(兰白锌)	Bolt M6×55(blue white zinc)	2		
18	B166740A06003570X	GB16674小盘螺栓M6×35(兰白锌)	Bolt M6×35(blue white zinc)	1		
19	B166740A06002070X	GB16674小盘螺栓M6×20(兰白锌)	Bolt M6×20(blue white zinc)	3		
20	B166740A06006070X	GB16674小盘螺栓M6×60(兰白锌)	Bolt M6×60(blue white zinc)	1		
21	B166740A06002870X	GB16674小盘螺栓M6×28(兰白锌)	Bolt M6×28(blue white zinc)	2		

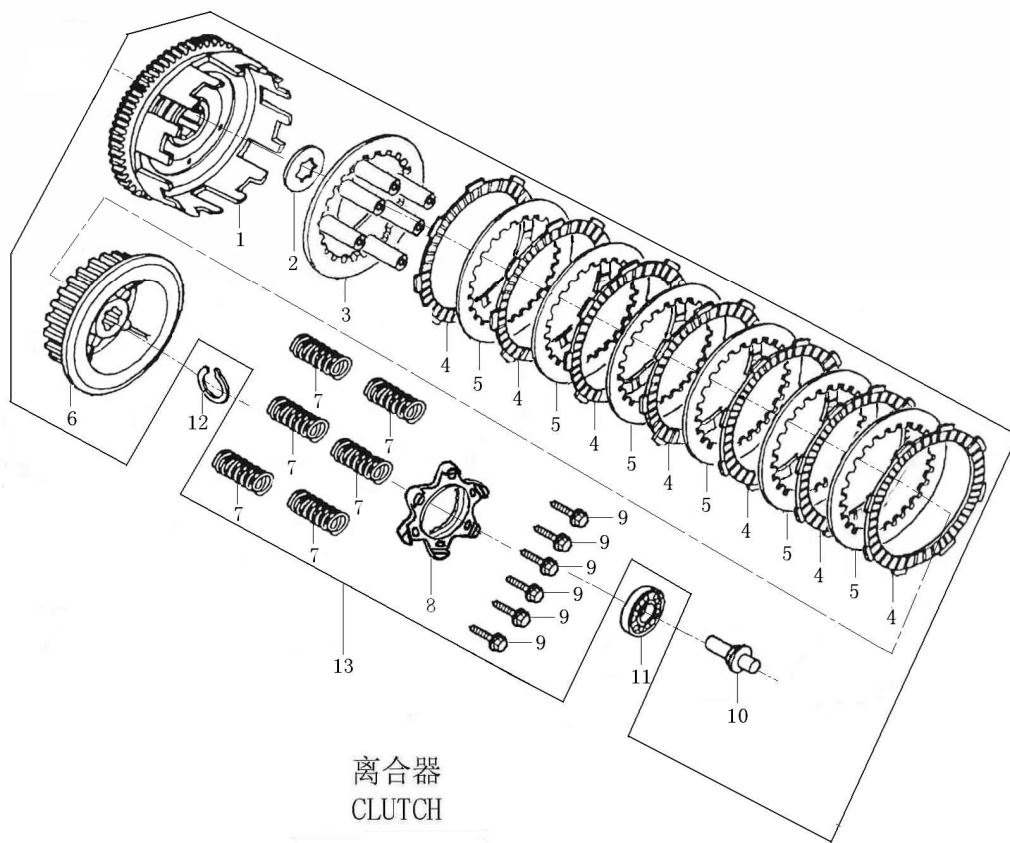
22	90204-I049-0000	CB125D左曲轴箱前盖密封垫	Gasket, L.crankcase Cover	1		
23	91521-08001400000	70定位销8×14×6.3	Pin 8×14×6.3	2		
24	92102-I008-0001	CG125D含油轴承(铁基)	Oil Bearing	1		

曲轴箱盖 Crankcase Cover 2



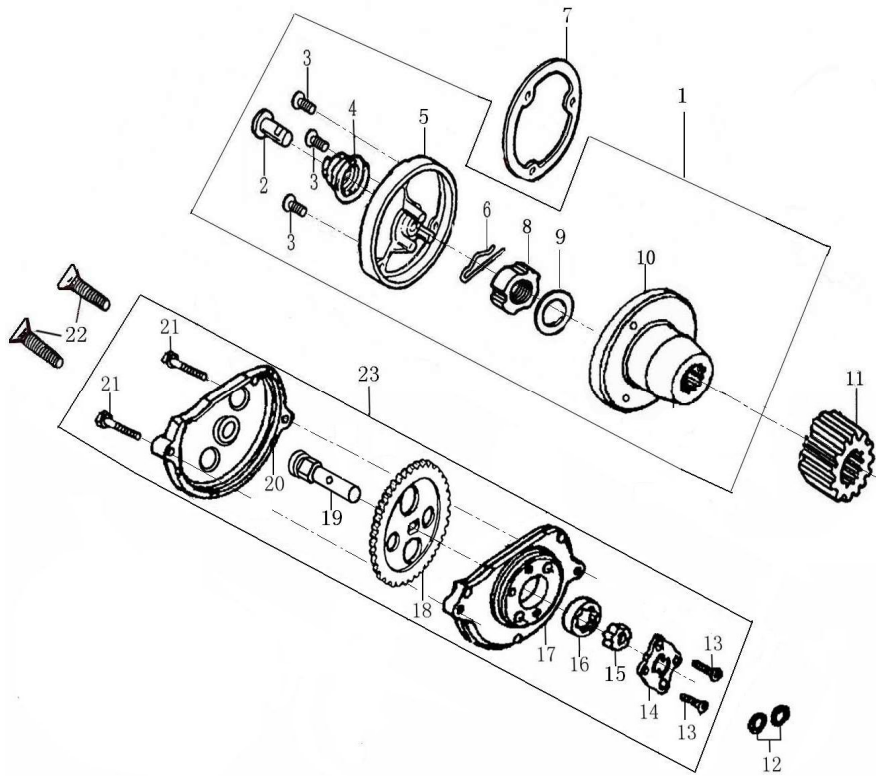
序 NO.	件号 Item Code	中文名称 Chinese	英文名称 Description	数量 Q' ty	单价 ¥	美元 \$
25	12301-I049-000063	CB125D左曲轴箱前盖[白板(普通款) 6805]	Front part, L.Crankcase Cover	1		
26	90101-10132000265	C100小视孔盖O形圈13.2×2.65(丁腈胶)	Manhead O-ring 13.2×2.65	1		
27	12303-G011-00000G	C100小视孔盖(白铬)	Cap, Small View Hole	1		
28	90101-10274000265	C100大视孔盖O形圈27.4×2.65(丁腈胶)	O-ring 27.4×2.65	1		
29	12307-I008-10010G	CG125D左前盖装饰盖(ZONGSHEN 鲸鱼款 白铬)	Decoratecover L.Crankcase Cover	1		
30	90101-10630000265	CB125D双联盖O形圈63×2.65(丁腈胶)	O-ring 63×2.65	1		
31	12308-I049-01000G	CB125D双联齿轮盖[白板(老款) 白铬]	Cover,Reduction Gear	1		
32	12302-I049-430063	CB125D左曲轴箱后盖[(CB125D-PT-13#) 6805]	Rear Part,L.Crankcase Cover	1		

离合器总成 Clutch ASSY



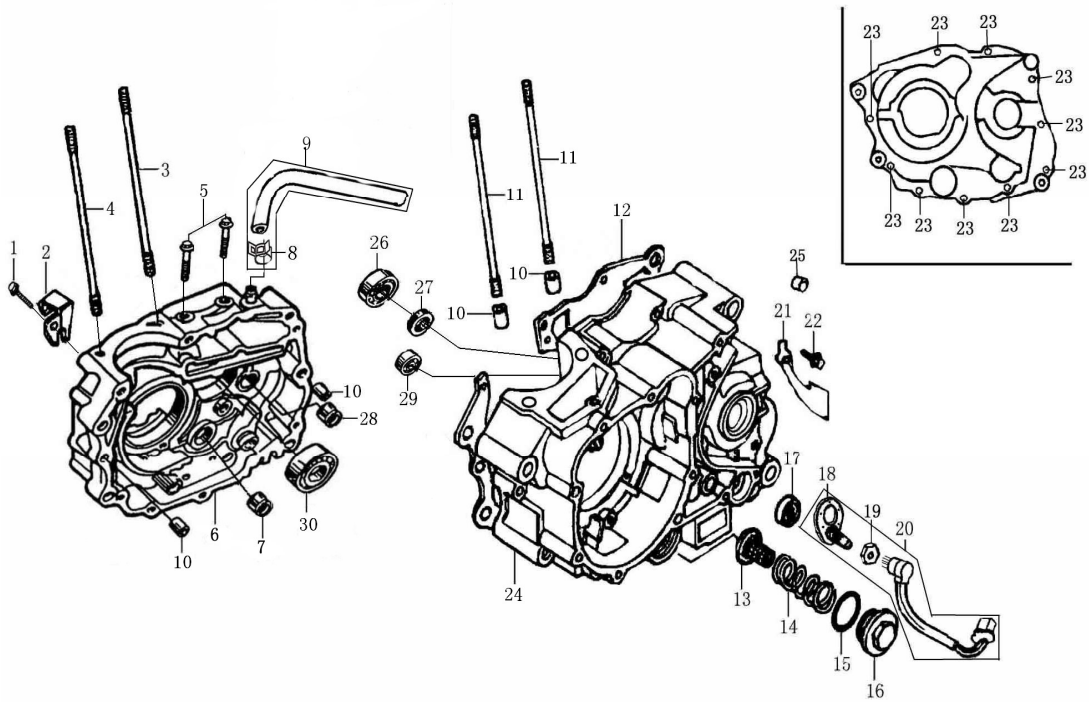
序 NO.	件号 Item Code	中文名称 Chinese	英文名称 Description	数量 Q' ty	单价 ¥ \$	
1	22150-LA73-0100	CG200-A水冷-3#离合器外罩组合	Out Case Cover, Clutch	1		
2	22002-I006-0000	CB125脚离合器花键垫圈	Washer For Spline	1		
3	22122-LA73-0000	CG200-A水冷离合器压盘	Pressure Board, Clutch	1		
4	22214-LA73-0000	CG200-A水冷离合器主动摩擦片	Drive Friction Dics	7		
5	22215-J034-0000	CG150D离合器从动摩擦片(六柱)	Outer Friction Dic A	6		
6	22105-LA73-0100	CG200-A水冷-3#离合器中心套	Central Sleeve, Clutch	1		
7	22142-LA73-0000	CG200-A水冷离合器弹簧	Clutch Spring	6		
8	22121-LA12-0000	CG200D-B离合器端盖	Cluct End Cover	1		
9	91129-J034-00000B	CG150D离合器法兰盘螺栓M5×20(白锌)	Bolt M5×20	6		
10	22403-I006-0000	CB125脚离合器推杆	Pushing Rod, Clutch	1		
11	92102-00000016003	轴承(16003)	Bearing (16003)	1		
12	91403-I008-0000	CG125D离合器挡圈20	Elastci Check Ring	1		
13	22000-LA73-0903	CG200-A水冷-3#离合器总成	Clutch Assy(Without Bearing)	1		

机油泵部件/机油滤清器部件 Oil Pump/ Oil Filter



序 NO.	件号 Item Code	中文名称 Chinese	英文名称 Description	数量 Q'ty	单价	
					¥	\$
1	14200-IA20-0100	SB125-2#机油滤清器部件	Oil Filter	1		
2	14201-I006-0000	CB125脚机油滤清器出油管	Oil Pipe	1		
3	B008190105001220B	GB819.1螺钉M5×12(白锌)	Screw M5×12	3		
4	14202-I006-0000	CB125脚机油滤清器出油管弹簧	Spring of Oil Pipe	1		
5	14207-IA20-00000W	SB125机油滤清器盖(抛丸钝化)	Oli Filter Cover	1		
6	14208-I006-0000	CB125脚机油滤清器开口销	Oli Filter Pin	1		
7	90209-IA20-0000	SB125滤清器端盖密封垫	Gasket ,Oil Filter	1		
8	91203-IA20-0000	SB125机油滤清器螺母	Oli Filter Nut	1		
9	22004-I006-0000	CB125脚离合器碟形垫圈16.5×2×27	Dish Washer,Clutch	1		
10	14203-IA20-0100	SB125-2#机油滤清器转子组件	Rotor Assy.of Oil Filter	1		
11	23101-I006-0000	CB125脚主动齿	Primary Drive Gear	1		
12	90101-10094000240	CG125机油泵O形圈9.4×2.4(丁腈胶)	O-ring 9.4×2.4	2		
13	B008190104001020B	GB819.1螺钉M4×10(白锌)	Screw M4×10	2		
14	14108-L044-0200	CB200机油泵盖板(电感式 钢齿)	Oil Pump Cover	1		
15	14111-L044-0200	CB200机油泵内转子(电感式 钢齿)	Inner Rotor, Oil Pump	1		
16	14112-L044-0000	CB200机油泵外转子	Outer Rotor, Oil Pump	1		
17	14110-L044-0200	CB200机油泵泵体(电感式 钢齿)	Oil Pump Body	1		
18	14102-L044-0001	CB200机油泵齿轮(m=1.75 z=37 电感式 钢齿)	Gear,Oil Pump	1		
19	14107-L044-0200	CB200机油泵油泵轴(电感式 钢齿)	Shaft, Oil Pump	1		
20	14113-L044-0000	CB200机油泵齿轮盖(电感式 钢齿)	Gear Cover, Oil Pump	1		
21	B057820005002070B	GB5782螺栓M5×20(白锌)	Bolt M5×20	2		
22	B008190106003020B	GB819.1螺钉M6×30(白锌)	Screw M6×30	2		
23	14100-L044-0000	CB200机油泵部件(37齿 电感式)	Oil Pump Assy	1		

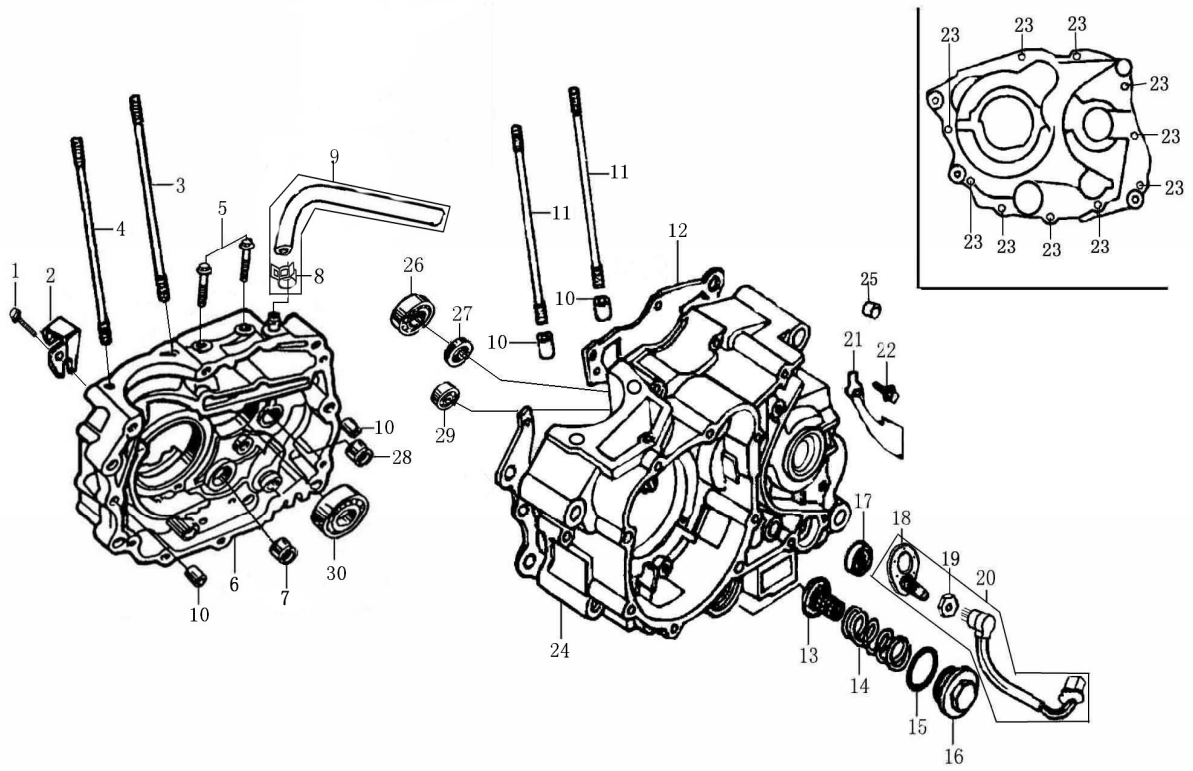
曲轴箱 Crankcase 1



序	件号	中文名称	英文名称	数量	单价	
NO.	Item Code	Chinese	Description	Q'ty	¥	\$
1	B166740A06005570X	GB16674小盘螺栓M6×55(兰白锌)	Bolt M6×55	1		
2	22422-IA18-01000G	PZ125-2#离合器钢索支架(白铬)	Clutch Cable Holder	1		
3	91102-L044-0000	CB200气缸双头螺栓B(229mm)	Cylinder Stud Bolt B	1		
4	91102-L044-0100	CB200-2#气缸双头螺栓B(229mm)	Cylinder Stud Bolt B	1		
5	B166740A06002870X	GB16674小盘螺栓M6×28(兰白锌)	Bolt M6×28	2		
6	1222B-ME05-010063	CB250D-G右曲轴箱组合(低噪音专用 6805)	Right Crankcase Assy	1		
7	92102-000HK212810	滚针轴承(HK21×28×10)	Bearing (HK212810)	1		
8	18097-I008-0000	CG125D废气循环管 I 卡箍	Clamp	3		
9	12130-MA95-0200	CG250-3#通气管组件(复合层材料 卡箍2个)	Pipe ASSY	1		
10	91521-10001400000	CG125脚定位销10×14	Pin 10×14	4		
11	91101-KA35-0000	IB175-FC气缸双头螺栓A(240mm)	Cylinder Stud Bolt A(240mm)	2		
12	90208-ME05-0000	CB250D-G曲轴箱密封垫	Crankcase Gasket	1		
13	1431B-I006-0000	CB125脚机油过滤网组合	Oil Filter Strainer	1		
14	14221-I006-0000	CB125脚机油过滤网弹簧	Spring of Oil Filter Strainer	1		
15	90101-20350000300	CB125气门盖O形圈35×3(氟硅胶)	O-ring 35×3	1		
16	11230-I006-00000W	CB125脚气门室盖(抛丸钝化)	Cover, Valve Chamber	1		
17	90301-I006-0000	CB125脚换挡臂油封14×28×7(丁腈胶)	Oil Seal 14×28×7	1		
18	88001-I049-0500	CB125D档显板(五档国际档)	Gearshift Switch plate	1		
19	91204-I049-0000	CB125D档显板螺母M10	Nut M10	1		
20	8803B-I049-050055	CB125D档显线束组合(五档国际 L:550)接口D01	Gearshift Switch Lamp	1		
21	12103-I008-0000	CG125D挡线片	Positioning Plate	1		
22	B166740A06001270B	GB16674小盘螺栓M6×12(白锌)	Bolt M6×12	1		

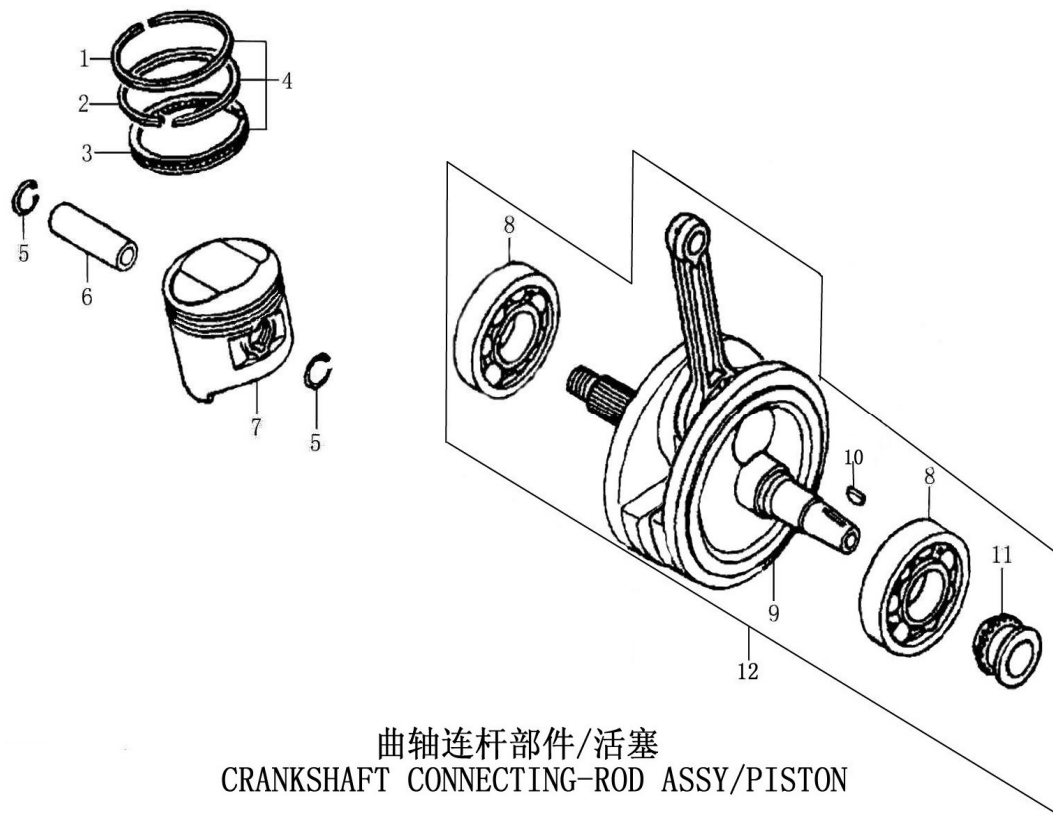
23	B166740A06005070X	GB16674小盘螺栓M6×50(兰白锌)	Bolt M6×50	10		
24	1212B-IA27-000063	CB133左曲轴箱组合(6805)	Left Crankcase Assy	1		

曲轴箱 Crankcase 2



序	件号	中文名称	英文名称	数量	单价	
NO.	Item Code	Chinese	Description	Q' ty	¥	\$
25	92102-I008-0001	CG125D含油轴承(铁基)	Bearing	1		
26	92102-00000006204	轴承(6204)	Bearing (6204)	1		
27	90303-I006-0000	CB125脚副轴油封20×34×7(丁腈胶)	Oil Seal 20×34×7	1		
28	92102-000NK152312	滚针轴承(NK15×23×12)	Bearing (NK15×23×12)	1		
29	92102-0000TM6202Z	轴承(TM6202Z)	BearingG (TM6202Z)	1		
30	92102-00000006006	轴承(6006)	Bearing (6006)	1		

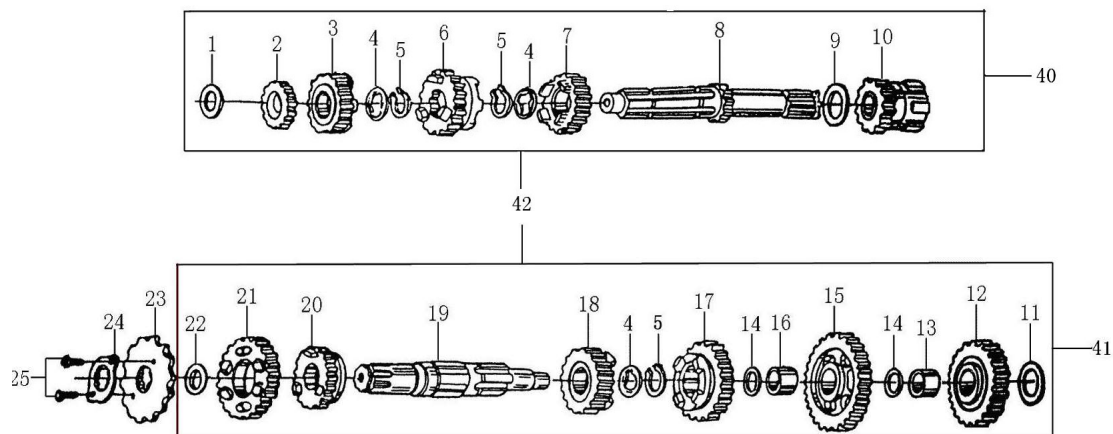
曲轴连杆部件/活塞 Crankcase Connecting Rod ASSY/Piston



曲轴连杆部件/活塞
CRANKSHAFT CONNECTING-ROD ASSY/PISTON

序	件号	中文名称	英文名称	数量	单价	
NO.	Item Code	Chinese	Description	Q' ty	¥	\$
1	13103-ME05-0000	CB250D-G活塞环一	Piston Ring 1	1		
2	13104-ME05-0000	CB250D-G活塞环二	Piston Ring 1	1		
3	13120-ME05-0000	CB250D-G油环组合	Oil Ring ASSY	1		
4	1310A-ME05-0100	CB250D-G活塞环总成	Pistonring ASSY	1		
5	91401-I006-0000	CB125脚活塞销挡圈	Check, Piston Pin	2		
6	13102-LA66-0000	CG200-A活塞销	Pin Piston	1		
7	13101-LE26-0000	CBB200活塞	Piston	1		
8	92102-00TMSC06B42	左曲柄轴承(TM-SC06B42)	Bearing (TM-SC06B42)	2		
9	13220-ME05-0000	CB250D-G曲轴连杆组合	Connection Rod Comp 3	1		
10	91601-I008-0000	CG125D半圆键25×14×4	Woodruff Key	1		
11	13222-ME05-0000	CB250D-G正时主动链轮	Drive Sprocket	1		
12	1320B-ME05-0000	CB250D-G曲轴连杆部件	Crankshaft Connection Rod Assy	1		

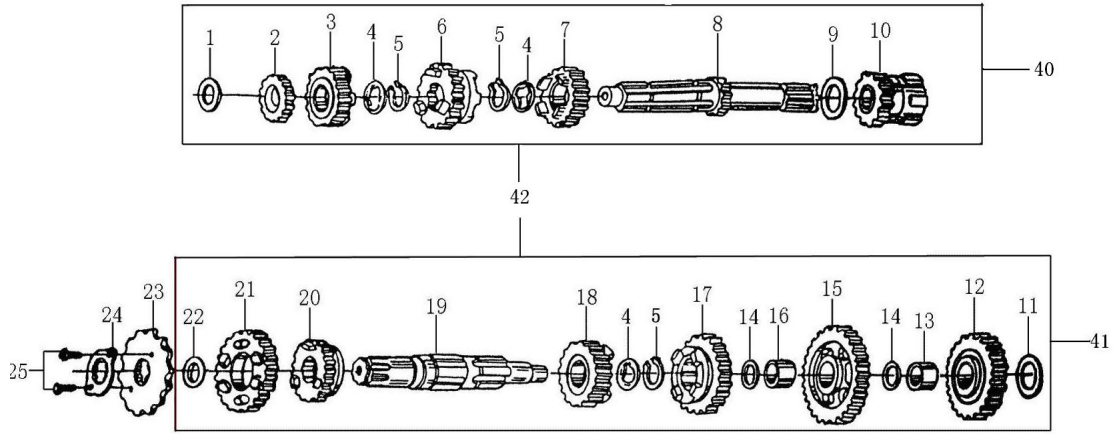
传动机构 Transmission Mechanism 1



序 NO.	件号 Item Code	中文名称 Chinese	英文名称 Description	数量 Q' ty	单价 ¥ \$	
1	93301-61521025000	CB125主轴止推垫圈 15.2×1×25	Washer 15.2×1×25	1		
2	23222-LA73-0002	CG200-A水冷主轴2档齿轮	Gear M-2	1		
3	23222-LA73-0005	CG200-A水冷主轴5档齿轮	Gear M-5	1		
4	23223-I006-0000	CB125脚齿轮隔圈 17.3(20)×1.6×26	Washer 17.3(20)×1.6×26	3		
5	91402-D002-0100	70启动轴挡圈 φ18.5×1.2×φ22.1	Start Axle Check Ring φ18.5×1.2×φ22.1	3		
6	23222-LA73-0004	CG200-A水冷主轴4档齿轮	Gear M-4	1		
7	23222-LA73-0003	CG200-A水冷主轴3档齿轮	Gear M-3	1		
8	23221-LA73-0000	CG200-A水冷主轴芯轴	Transmission Main Shaft	1		
9	93301-62020527000	CB125主轴止推垫圈 20.2×0.5×27	Washer 20.2×0.5×27	1		
10	23231-I008-0000	CG125D主轴起动齿轮组合	Final Shaft	1		
11	93301-61521030000	CB125副轴止推垫圈 15.2×1×30	Washer 15.2×1×30	1		
12	23248-I008-0000	CG125D副轴启动过桥齿轮	Gear	1		
13	23203-I008-0003	CG125D副轴启动齿轮衬套	Gear Bush	1		
14	93301-51650524000	CG125D副轴止推垫圈 16.5×0.5×24	Washer 16.5×0.5×24	2		
15	23242-LA73-0001	CG200-A水冷副轴1档齿轮	Gear C-1	1		
16	23203-I006-0001	CB125脚副轴1档齿轮衬套	Gear Bush	1		
17	23242-LA73-0003	CG200-A水冷副轴3档齿轮	Gear C-3	1		
18	23242-LA73-0004	CG200-A水冷副轴4档齿轮	Gear C-4	1		
19	23241-I008-0000	CG125D-1#五档副轴芯轴	Transmission Counter Shaft	1		
20	23242-LA73-0005	CG200-A水冷副轴5档齿轮	Gear C-5	1		
21	23242-LA73-0002	CG200-A水冷副轴2档齿轮	Gear C-2	1		
22	93301-52001027000	CG125D副轴止推垫圈 20×1×27	Washer 20×1×27	1		
23	23401-MA95-0001	CG250主动链轮(520.13)	Drive Sprocket(520.13)	1		

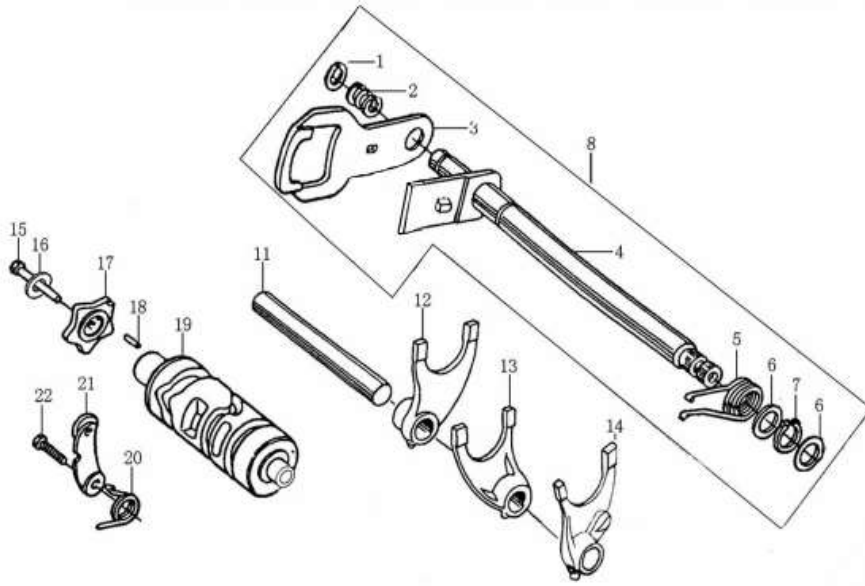
24	23402-I006-0000	CB125脚主动链轮固定板	Fixing Plate, Drive Sprocket	1		

传动机构 Transmission Mechanism 2



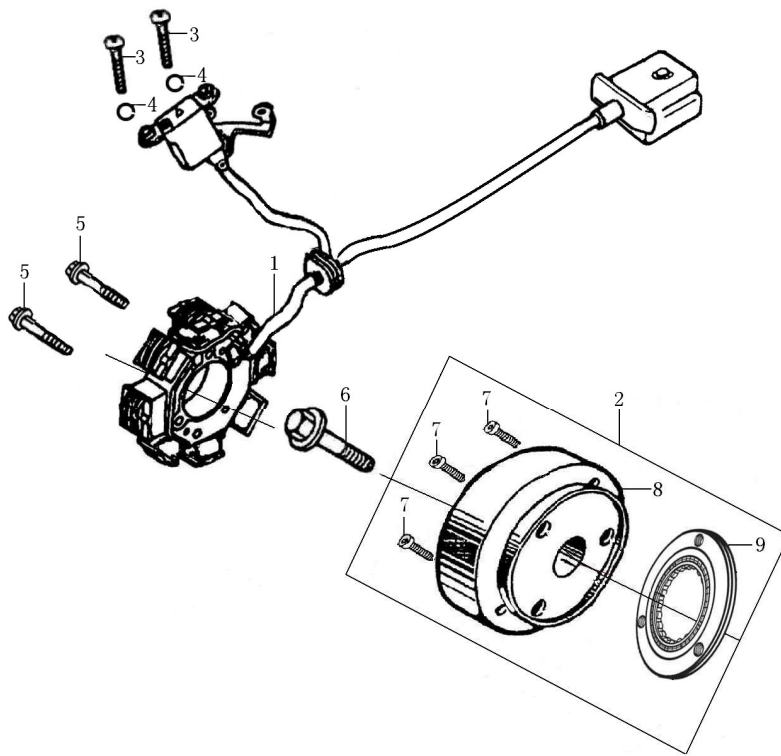
序	件号	中文名称	英文名称	数量	单价	
NO.	Item Code	Chinese	Description	Q' ty	¥	\$
25	B057830006001070B	GB5783螺栓M6×10(白锌)	Bolt M6×10	2		
26						
27						
28						
29						
30						
31						
32						
33						
34						
35						
36						
37						
38						
39						
40	23220-LA73-0000	CG200-A水冷主轴组合	Tansmmison Main Shaft	1		
41	23240-LA73-0000	CG200-A水冷-1#副轴组合	Transmmison Counter Shaft	1		
42	23200-LA73-0200	CG200-A水冷-2#主副轴组合	Tansmmison Shaft ASSY	1		

变速机构 Gearshift Mechanism



序 NO.	件号 Item Code	中文名称 Chinese	英文名称 Description	数量 Q' ty	单价 ¥ \$	
1	B0089401120000000	GB894.1挡圈12	Circlip 12	1		
2	24303-I006-0000	CB125脚换档板弹簧	Gearshift Plate Spring	1		
3	24319-I006-0000	CB125脚换档板(五档国际档)	Gearshift Plate	1		
4	24301-I006-00000C	CB125脚换档轴组合(五档国际档 彩锌)	Gearshift Shaft ASSY	1		
5	24302-I008-0000	CG125D换档回位弹簧	Return Spring	1		
6	93301-51400520000	CB125脚换档臂垫圈14×0.5×20	Washer 14×0.5×20	2		
7	B0089401140000000	GB894.1挡圈14	CirClip 14	1		
8	24300-I006-00000C	CB125脚换档臂部件(CB125脚 五国 彩锌)	Gearshift Lever ASSY	1		
9						
10						
11	24107-I006-0000	CB125脚拨叉轴	Gearshift Spork Shaft	1		
12	24104-I006-0000	CB125脚副轴右拨叉	Right Fork, Countershaft	1		
13	24106-I006-0000	CB125脚主轴拨叉	Center Fork, Mainshaft	1		
14	24105-I006-0000	CB125脚副轴左拨叉	Left Fork, Countershaft	1		
15	91126-I008-00000B	CG125D五星板紧固螺栓(白锌)	Bolt	1		
16	B00093000600000000	GB93弹垫6	Washer φ6	1		
17	24202-I006-0500	CB125脚五星板(五档国际档)	Stopping Plate	1		
18	B0011901040100000	GB119.1销4×10	Pin 4×10	1		
19	24213-I006-0500	CB125脚变速鼓(五档国际档)档显	Gearshift Drum	1		
20	24304-I006-0000	CB125脚定位板弹簧	Spring, Locating Plate	1		
21	2434A-I008-0000	CG125D定位板组合(短压板四/五档国际档)	Locating Plate ASSY	1		
22	B057830006002070B	GB5783螺栓M6×20(白锌)	Bolt M6×20	1		

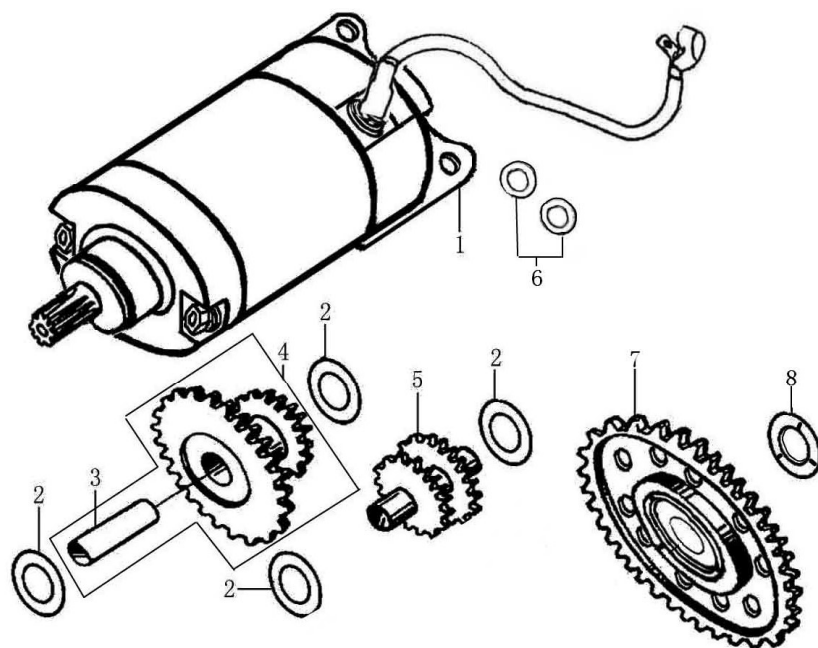
磁电机总成 Magneto ASSY



磁电机总成 MAGNETO COMP

序 NO.	件号 Item Code	中文名称 Chinese	英文名称 Description	数量 Q' ty	单价 ¥ \$	
1	82120-IA27-000160	CB133磁电机定子组合(12V12极三相全波直流) L1:600接口G1	Stator ASSY, Magneto	1		
2	82130-IA27-0200	CB133磁电机转子组合(12V12极 带楔块分体式超离)	Rotor ASSY, Magneto	1		
3	B008230004001020B	GB823螺钉M4×10(白锌)	Screw M4×10	2		
4	B0009300040000000	GB93弹垫4	Washer φ4	2		
5	B166740A06002870B	GB16674小盘螺栓M6×28(白锌)	Bolt M6×28(white zinc)	2		
6	91106-I008-0000	CG125D磁电机安装螺栓M10×36	Magneto Mounting Bolt M10×36	1		
7	91197-I008-00000C	CG125D超越离合器紧固螺钉M8×18(彩锌)	Overrunning Bolt M8×18(color zinc)	3		
8	82130-I049-0301	CB125D-2#磁电机转子组合(12V8极 不带超越离合器)	Rotor ASSY, Magneto	1		
9	21300-LA73-0000	CG200-A水冷超越离合器部件(模块式)	Overrunning Clutch Assy	1		

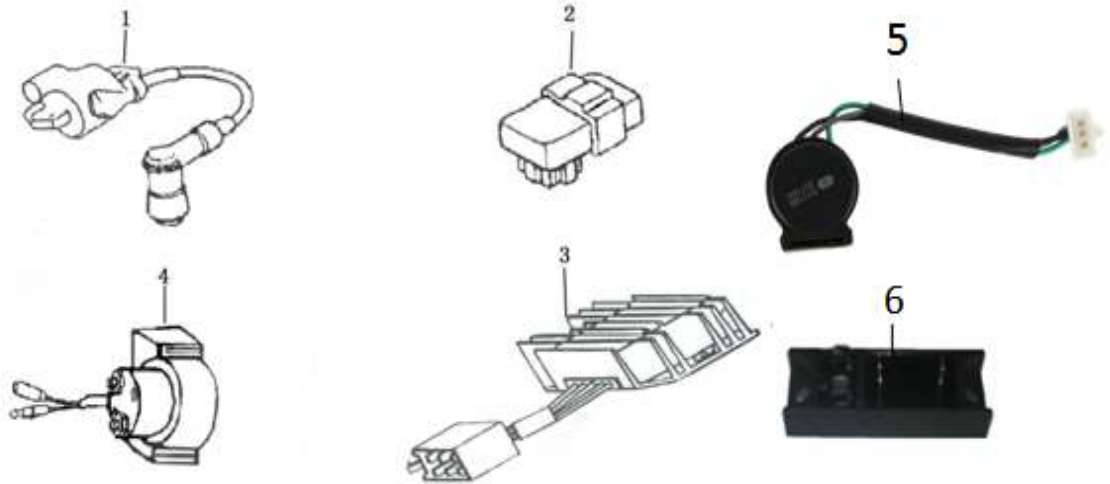
电启动机构 Electrical Starter



电启动机构
ELECTRIC STARTING MECHANISM

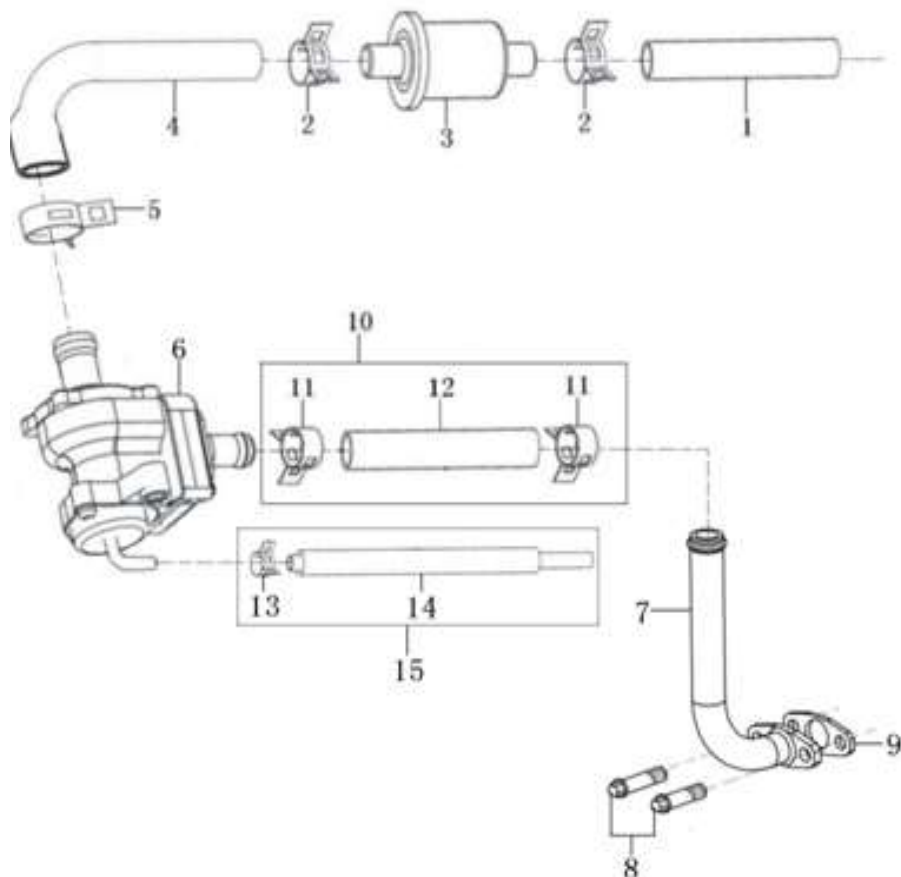
序 NO.	件号 Item Code	中文名称 Chinese	英文名称 Description	数量 Q'ty	单价	
					¥	\$
1	82200-ME05-020280	CB250D-G-2#启动电机部件(6805 单线靴形800)	Starting Motor ASSY	1		
2	93301-51050518000	CG125D双联齿轮垫圈10.5×0.5×18	Washer 10.5×0.5×18	4		
3	21402-I049-0000	CB125D双联齿轮轴	Shaft, Reduction	1		
4	2140A-L044-0100	CB200-2#双联齿轮组合(一)	Gear, Reduction, 1	1		
5	21401-L044-0000	CB200双联齿轮(二)	Gear, Reduction, 2	1		
6	82202-ME05-0000	CB250D-G电机安装座圈	CB250D-G Electric Machine Mounting Base Washer	2		
7	2142A-IA27-0000	CB133启动大齿轮组合(整体式)	CB133 Plate Gear ASSY	1		
8	93301-E2203534000	CB125D-2#盘形齿垫圈22×3.5×34	CB125D-2#Disk Washer 22×3.5×34	1		

电器 Electric Components



序	件号	中文名称	英文名称	数量	单价	
NO.	Code name	Chinese	Description	Q' ty	¥	\$
1	01020028	高压包MG03B L:500	Ignition Coil	1		
2	01020024	点火器组合CDI-ZSZ09-000	C.D.I	1		
3	01020025	整流器	Rectifier	1		
4	01020027	继电器MQJ10-ZS01A	Relay	1		
5	01020011	闪光器		1		
6	01020036	整流二极管 (整流桥)	Rectifier Diode	1		

二次进气系统 Second Inlet System (0072501101)



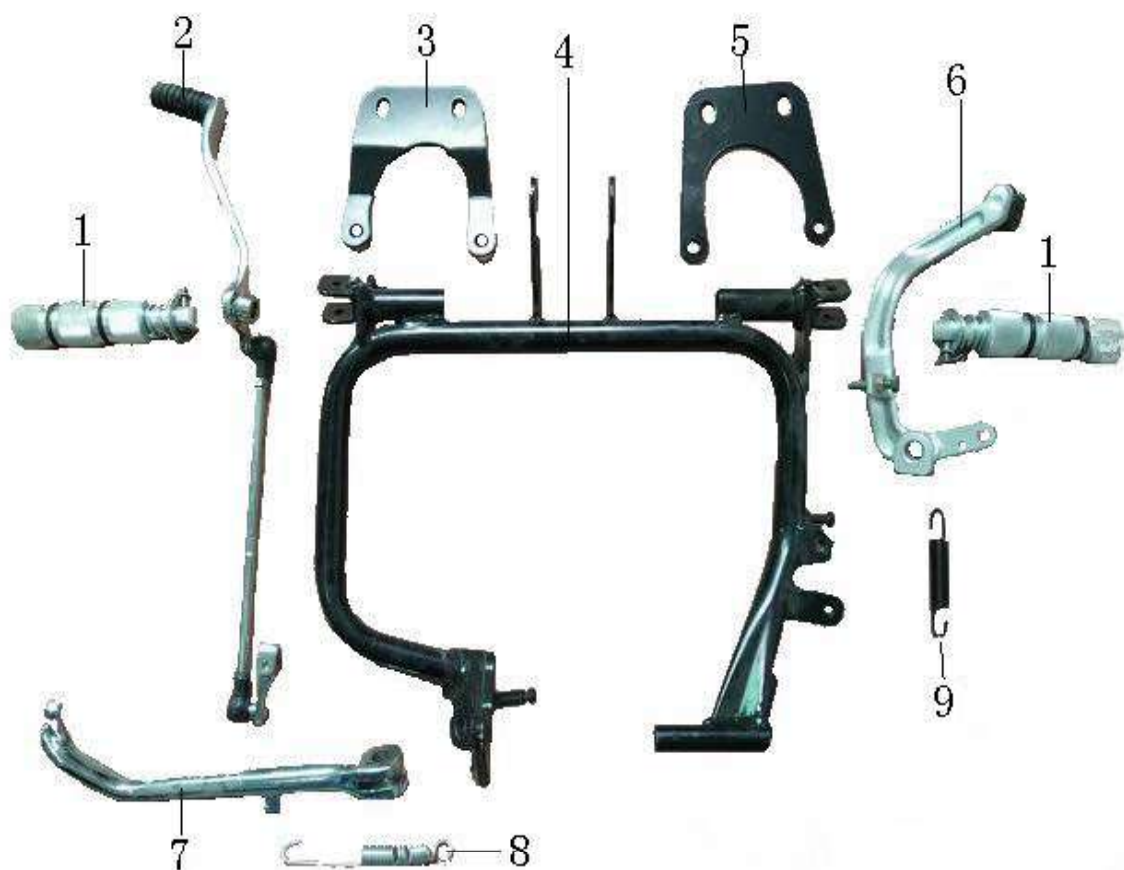
序 NO.	件号 Code name	中文名称 Chinese	英文名称 Description	数量 Q'ty	单价	
					¥	\$
1	16156-I008-0100	CG125D二次空滤器连接胶	Connecting Pipe	1		
2	16157-I008-0000	二次空滤器连接胶管卡圈	Hoop	2		
3	16160-I008-0000	CG125D二次空滤器部件	Second Air Box Valve	1		
4	16156-I008-0000	CG125D二次空滤器连接胶	Connection Pipe	1		
5	16157-I008-0100	二次空滤器连接胶管卡圈	Hoop	1		
6	18090-J034-0001	CG150D空气泵(带防尘胶)	Gas Pump	1		
7	1809B-LA66-00000Y	CG200-A废气循环铁管组合	Iron Pipe	1		
8	B166740A06001670X	GB16674小盘螺栓M6×16	Bolt M6X16	2		
9	90268-DA80-0000	PW70废气循环铁管纸垫	Paper Gasket	1		
10	18110-LA66-0000	CG200-A废气循环橡胶管组	Rubber Pipe	1		
11	18097-I008-0000	CG125D废气循环管 I 卡箍	Clamp	2		
12	18092-LA66-0000	CG200-A废气循环橡胶管 I	Rubber Pipe	1		
13	18097-I008-0100	CG125D废气循环管 II 卡箍	Clamp	1		
14	18092-I008-0103	废气循环橡胶管 II-4#	Rubber Pipe	1		
15	18110-I008-0103	废气循环橡胶管组件 II-4#	Rubber Pipe	1		

车架、方向柱 Frame and Accessories



序	件号	中文名称	英文名称	数量	单价	
NO.	Code name	Chinese	Description	Q'ty	¥	\$
1	0201-250RTR	车架	Frame	1		
2	01050027	消声器	Muffler	1		
3	04990008	后刹支架	Rear Caliper bracket	1		
4	10040033	计速器	Speed Counter	1		
5	02011403	发动机上左连接板	Engine fix board Left	1		
6	02011404	发动机上右连接板	Engine fix board Right	1		
7	05010060	坐垫总成	Seat	1		
8	01040028	空滤器	Air Filter	1		

前搁脚 Front Footrest



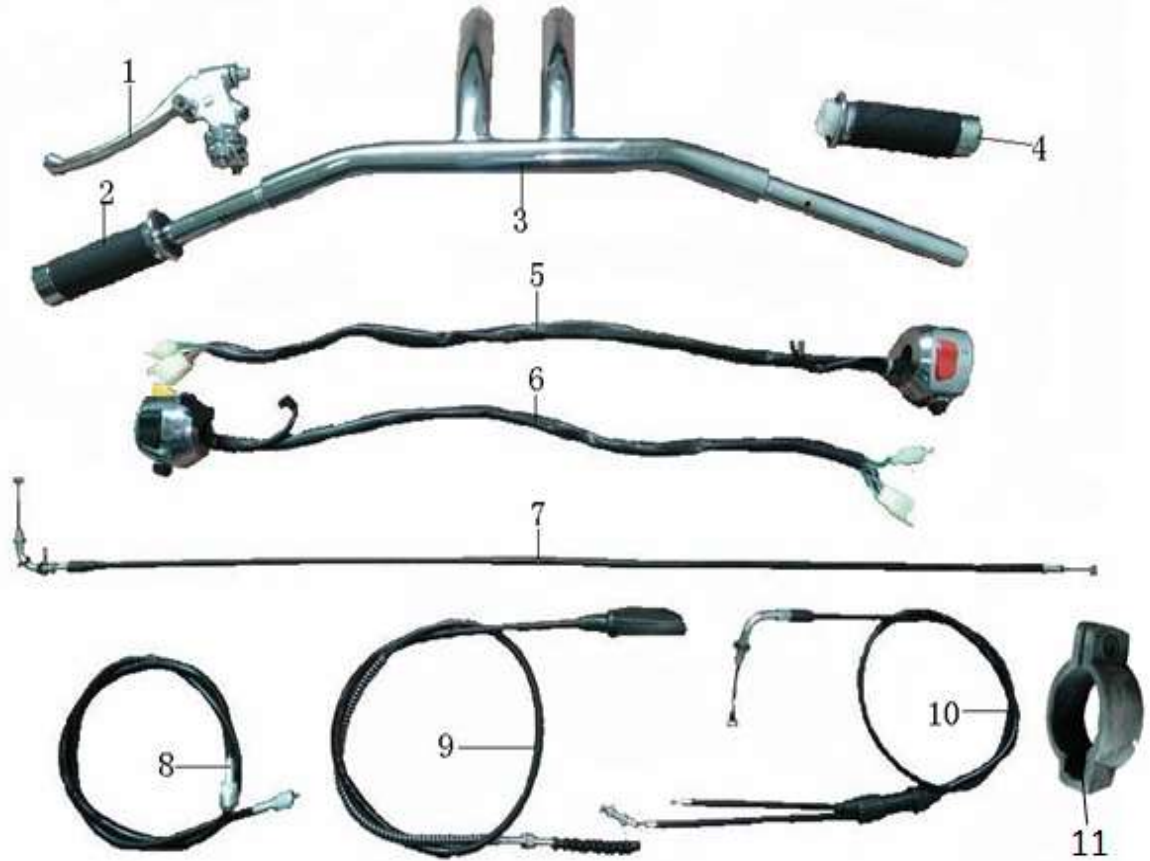
序	件号	中文名称	英文名称	数量	单价	
NO.	Code name	Chinese	Description	Q'ty	¥	\$
1	02050051	脚蹬	Footrest	2		
2	02011419	变档杆总成	Gearshift lever	1		
3	02011400	发动机前悬挂左	Engine hanger left	1		
4	02011413	主搁脚部件	Footrest seat	1		
5	02011402	发动机前悬挂右	Engine hanger right	1		
6	02011412	后刹车踏板	Rear brake Lever	1		
8	02011442	单撑	Side Stand	1		
9	07020015	单撑弹簧2.5*15*105*16	Spring 2.5*15*105*16	1		
10	07020099	脚刹弹簧1.8*12*85MM	Spring 1.8*12*85	1		

喇叭、后搁脚 Rear Footrest



序	件号	中文名称	英文名称	数量	单价	
NO.	Code name	Chinese	Description	Q'ty	¥	\$
1	10070005	喇叭	Horn	1对		
2	02011405	前照灯支架	Headlight bracket	1		
3	02011430	喇叭支架左	Horn Bracket left	1		
4	02011410	标牌支架	Plate bracket	1		
5	02011431	喇叭支架右	Horn Bracket Right	1		
6	02011414	左副搁脚支撑	Left footrest	1		
7	02011415	右副搁脚支撑	Right footrest	1		
8	02050052	后左搁脚总成	Footrest Peg	1		
9	02050053	后右搁脚总成	Footrest Peg	1		

方向把 Handle Bar & Cable



序	件号	中文名称	英文名称	数量	单价	
NO.	Code name	Chinese	Description	Q'ty	¥	\$
1	10030005	离合器手柄组件	Clutch Lever	1		
2	10020065	左把套	Hand grip left	1		
3	02030293	方向把	Handle bar	1		
4	10020066	油门把套	Hand grip Right	1		
5	10010037	组合开关(右)	Switch ASSY Right	1		
6	10010036	组合开关(左)	Switch ASSY Left	1		
7	08020108	风门线	Choke Cable	1		
8	08020111	里程线	Speedmeter cable	1		
9	08020105	离合线	Clutch Cable	1		
10	08020110	油门线	Throttle cable	1		
11	06020132	离合线卡扣	Clutch cable Clip	1		

前减震、方向柱及附件



序	件号	中文名称	英文名称	数量	单价	
NO.	Code name	Chinese	Description	Q'ty	¥	\$
1	06020135	减震套固定橡胶（小）	Shock rubber Small	2		
2	02011418	前减震上装饰筒	Shock rubber tube	2		
3	06020134	减震套固定橡胶（大）	Shock rubber Big	2		
4	02011416	前减震下左装饰筒	Shock bottom tube Left	1		
5	02011417	前减震下右装饰筒	Shock bottor tube Right	1		
6	07010127	前减震左	Front Shock Left	1		
7	07010128	前减震右	Front Shock Right	1		
8	06020129	仪表支架工字形橡胶	Speedmeter bracket rubber	2		
9	02030292	上联板	Upper connection plate	1		
10	/	/	/	/		
11	02030291	下联板立管组合	Lower connection plate	1		
12	12030053	钢碗	Bearing Set	1		
13	02011428	碟刹管上固定支架	Upper Brake hose Clip	1		
14	02011429	碟刹管下固定支架	Lower Brake hose Clip	1		

平叉、后减震 Rear Fork



序 NO.	件 号 Code name	中 文 名 称 Chinese	英 文 名 称 Description	数 量 Q' ty	单 价	
					¥	\$
1	02011401	平叉总成	Rear Fork ASSY	1		
2	07010129	后减震	Rear Shock	2		
3	02011406	链条调节器	Chian Adjuster	2		
4	06020131	链条护卡橡胶	Chain guard Rubber	1		
5	02011432	链条护卡压板	Chain guard plate	2		

油箱及附件



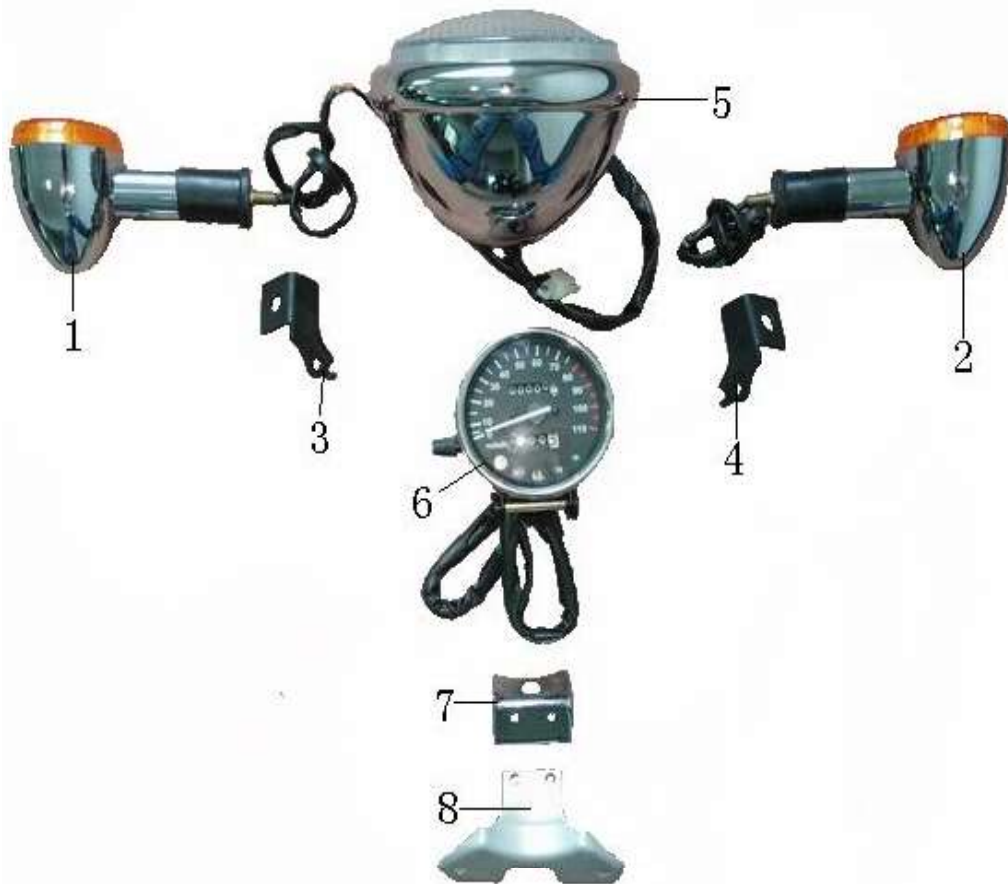
序	件 号	中文名称	英文名称	数量	单价	
NO.	Code name	Chinese	Description	Q' ty	¥	\$
1	10050069	油表	Fuel Gauge	1		
2	10060005	油箱开关	Fuel Switch	1		
3	03040070	油箱护罩	Fuel tank Plate	1		
4	05030056	油箱	Fuel tank	1		
5	06020133	油箱罩橡胶条	Plate rubber seal	1		
6	10040075	油位传感器	Fuel sensor	1		
7	06020127	油箱后上缓冲橡胶垫	Rear Tank rubber Upper	1		
8	06020126	油箱后下缓冲橡胶垫	Rear Tank rubber Lower	1		
9	06020125	油箱前缓冲橡胶	Front Tank rubber	2		

车架附件及锁 Frame Accessories



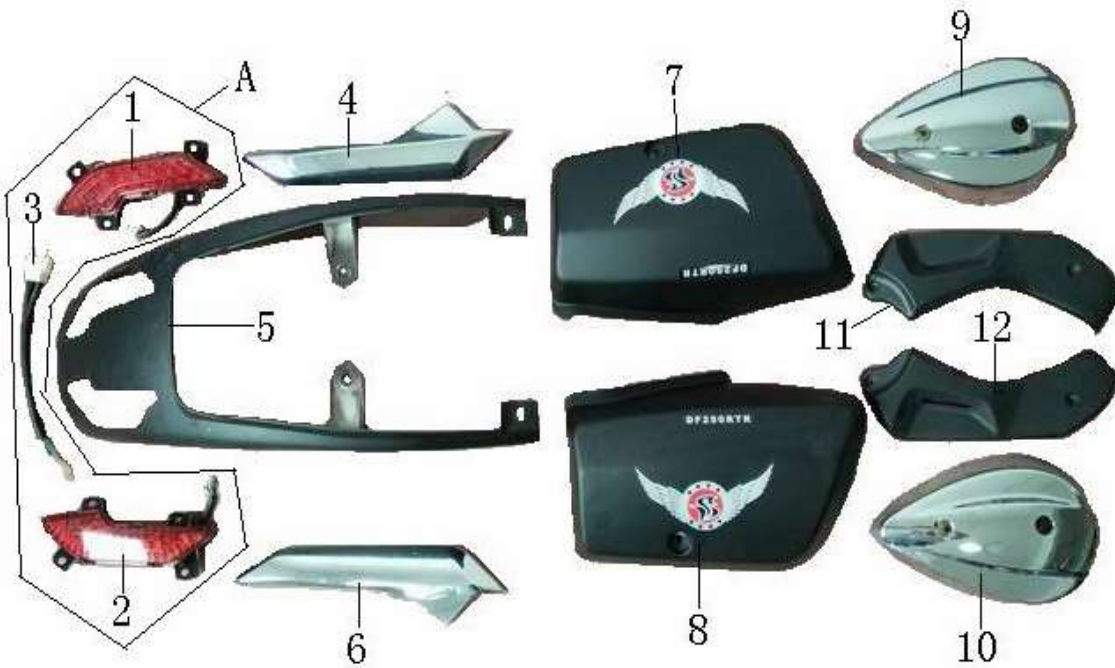
序 NO.	件号 Code name	中文名称 Chinese	英文名称 Description	数量 Q'ty	单价 ¥ \$	
1	02011420	发动机护罩左支架	Engine guard bracket Left	1		
2	02011407	蓄电池盒	Battery seat	1		
3	02011421	发动机护罩右支架	Engine guard bracket Right	1		
4	02011399	左侧盖支架	Left body bracket	1		
5	02011422	头盔锁支架	Helmet lock Bracket	1		
6	10080047	套锁	Lock	1		
7	08020109	坐垫拉线	Seat Cable	1		

灯具 Lights



序	件号	中文名称	英文名称	数量	单价	
NO.	Code name	Chinese	Description	Q' ty	¥	\$
1	09020136	前左转向灯	Front Indicator Left	1		
2	09020137	前右转向灯	Front Indicator Right	1		
3	02011425	左转向灯支架	Left Indicator bracket	1		
4	02011426	右转向灯支架	Right indicator bracket	1		
5	09010031	大灯	Headlight	1		
6	10050028	仪表	Speedmeter	1		
7	02010482	仪表支架(碗形)	Speedmeter bracket Upper	1		
8	02011427	仪表支架	Speedmeter bracket Lower	1		

覆盖件 Body covering



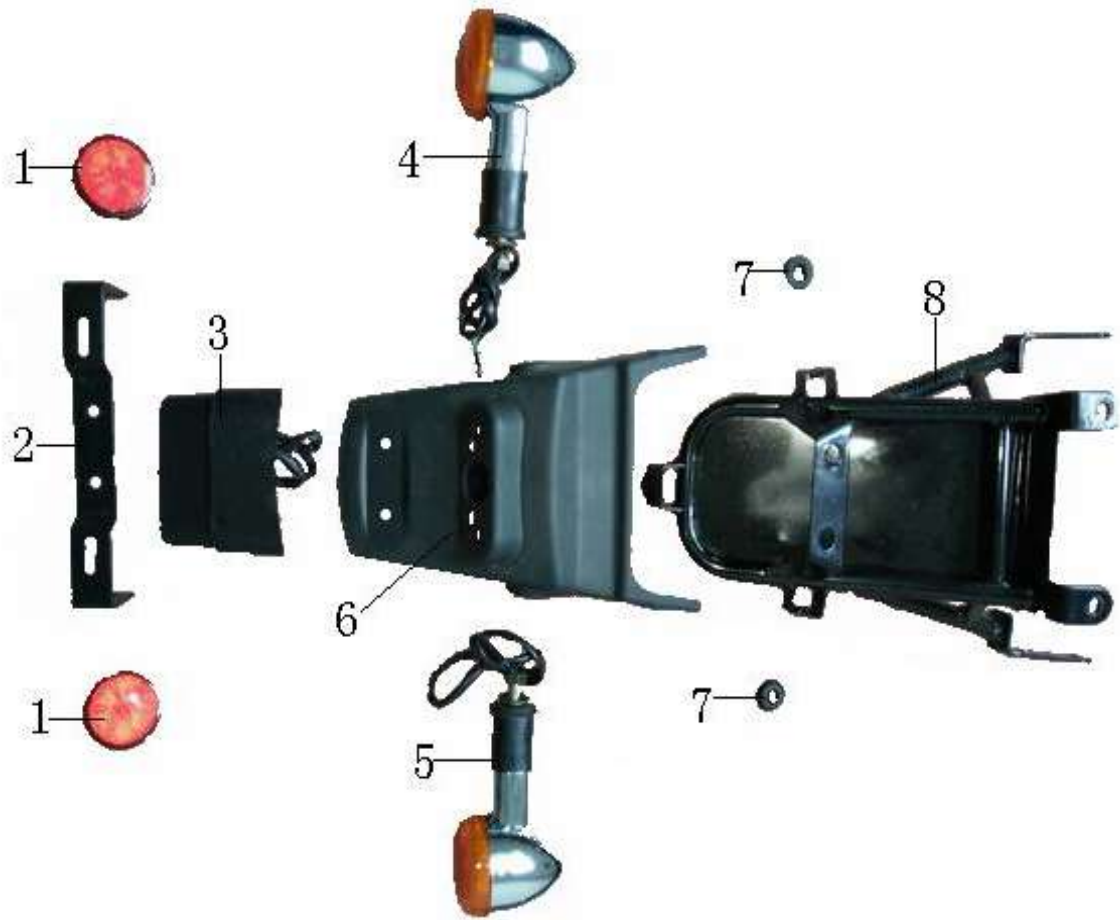
序	件号	中文名称	英文名称	数量	单价	
NO.	Code name	Chinese	Description	Q'ty	¥	\$
A	09030068	尾灯总成	Tail Light ASSY	1套		
1		左尾灯	Left Light	1		
2		右尾灯	Right Light	1		
3		连接线	Connection cable	1		
4	03040068	后挡泥板左装饰块	Rear fender plate Left	1		
5	03010526	后挡泥板	Rear Fender	1		
6	03040069	后挡泥板右装饰块	Rear fender plate Right	1		
7	03010527	左侧盖	Left Cover	1		
8	03010528	右侧盖	Right Cover	1		
9	03040071	发动机左护罩	Engine guard Left	1		
10	03040072	发动机右护罩	Engine guard Right	1		
11	03030778	车架围脖左	Frame guard left	1		
12	03030779	车架围脖右	Frame guard right	1		

挡泥板 Fenders



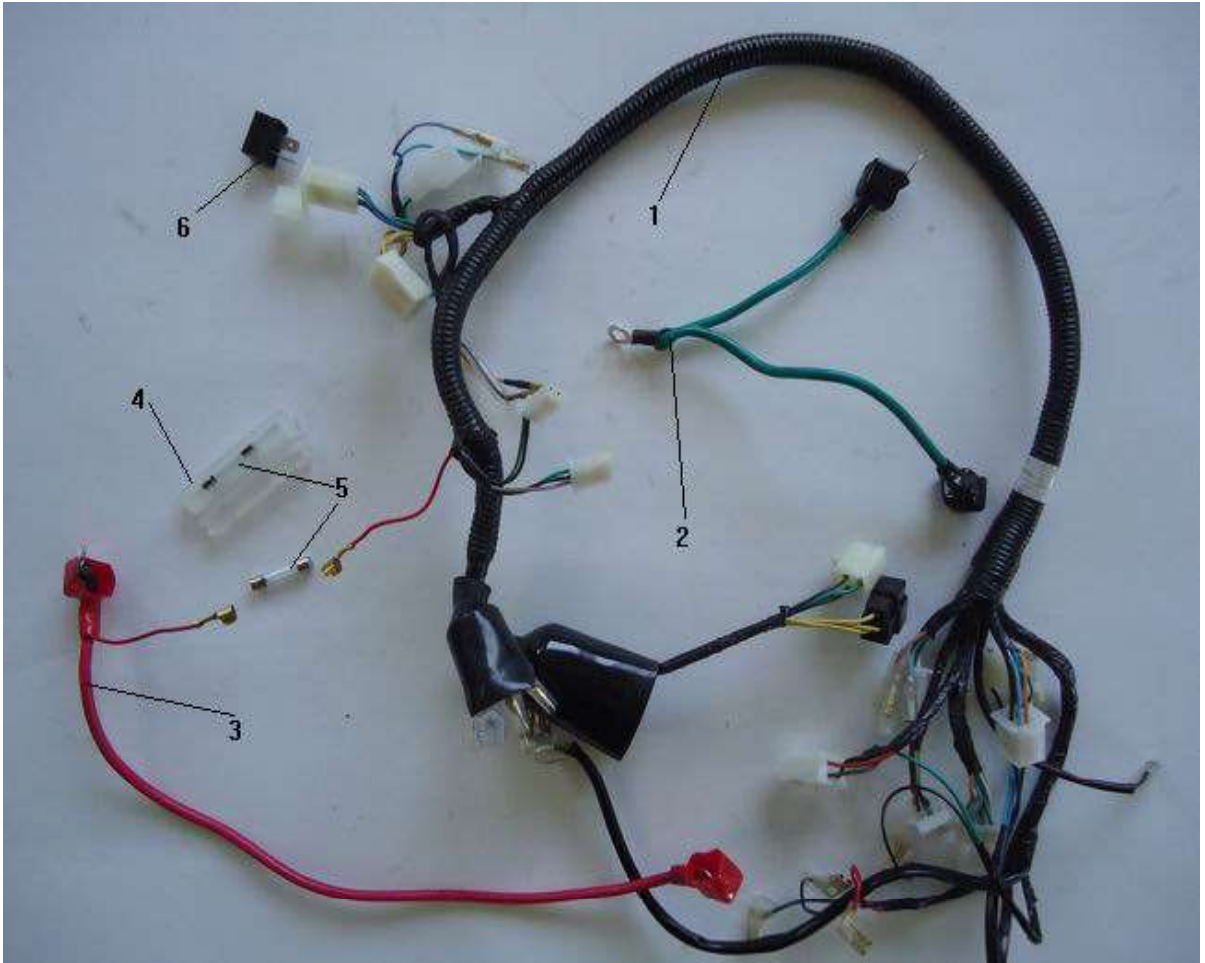
序	件号	中文名称	英文名称	数量	单价	
NO.	Code name	Chinese	Description	Q'ty	¥	\$
1	03030780	链盒	Chain Guard	1		
2	02011409	后挡泥板中段内衬板	Fender Scaleboard	1		
3	03030776	后挡泥板前段	Rear fender Bridge	1		
4	03030777	右小盖	Right cover	1		
5	06020136	工字形橡胶	Rubber	2		
6	02011423	左侧反光器支架	Reflector bracket left	1		
7	09050002	反光片 (橙色)	Reflector orange	2		
8	02011424	右侧反光器支架	Reflector bracket right	1		
9	03010525	前挡泥板	Front Fender	1		

后挡泥板 Rear Fender



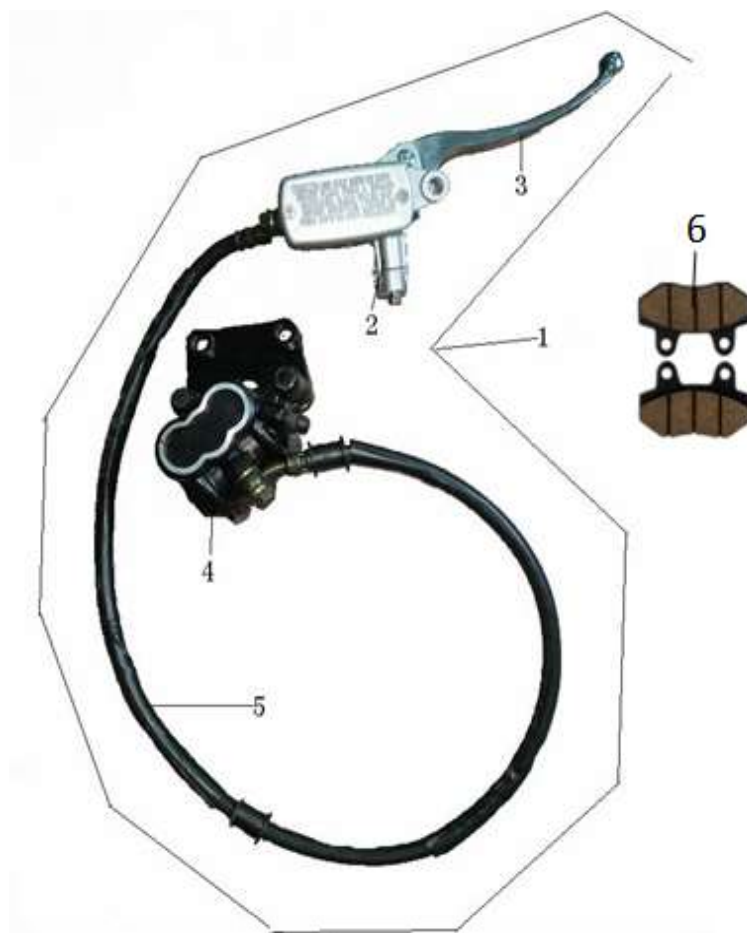
序 NO.	件 号 Code name	中文名称 Chinese	英文名称 Description	数量 Q' ty	单价	
					¥	\$
1	09050003	反光片 (红色)	Red Reflector	2		
2	02011411	后牌照支架	Plate Bracket	1		
3	09030070	牌照灯总成	License Light	1		
4	09020138	后左转向灯	Rear Indicator left	1		
5	09020139	后右转向灯	Rear Indicator right	1		
6	03030775	后挡泥板后部	Rear fender	1		
7	06020130	长腰空工字形橡胶	Rubber	8		
8	02011408	后挡泥板支架	Rear fender Bracket	1		

线缆 Wires



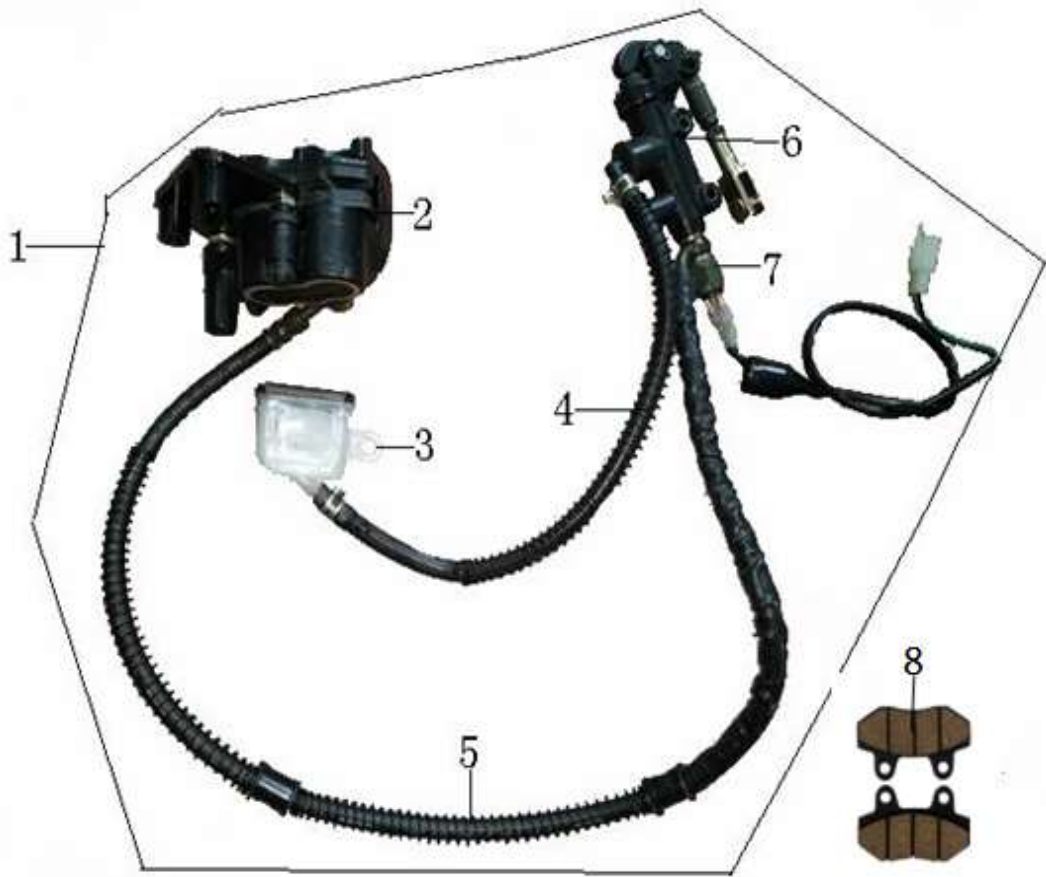
序	件号	中文名称	英文名称	数量	单价	
NO.	Code name	Chinese	Description	Q'ty	¥	\$
	08010037	电缆线	Cable	1		
1		主电缆	Main Wiring Harness	1		
2		电瓶负极线	Ground Cable	1		
3		电瓶正极线	Positive Cable	1		
4		保险盒	Fuse Holder	1		
5		保险丝	Fuse	2		
6		二极管	Diode	1		

前碟刹 Front Brake ASSY



序	件号	中文名称	英文名称	数量	单价	
NO.	Code name	Chinese	Description	Q'ty	¥	\$
1	04010039	前碟刹总成		1		
2		制动泵	Brake Pump	1		
3		手柄	Brake lever	1		
4		前制动钳	Brake caliper	1		
5		碟刹管	Brake hose	1		
6	190041	A博士刹车片 (7006)	Brake Pads (7006)	1付		

后碟刹总成 Rear brake ASSY



序 NO.	件 号 Code name	中文名称 Chinese	英文名称 Description	数量 Q' ty	单价	
					¥	\$
1	04010079	后碟刹总成	Rear brake ASSY	1		
2		后制动钳	Rear brake caliper	1		
3		油杯	Oiler	1		
4		进油管	Oil inlet hose	1		
5		碟刹管	Brake hose	1		
6		制动泵	Brake pump	1		
7		刹车开关	Brake Switch	1		
8	190041	A博士刹车片 (7006)	Brake Pads (7006)	1付		

轮胎、轮毂 Wheels



序	件号	中文名称	英文名称	数量	单价	
NO.	Code name	Chinese	Description	Q'ty	¥	\$
1	06010028	前轮胎 (110/70-17)	Front tire 110/70-17	1		
2	02040073	前轮毂	Front rim	1		
3	04020042	碟刹盘 (58*278*80/6)	Brake disc	1		
4	06010029	后轮胎 (140/70-17)	Rear tire 140/70-17	1		
5	02040074	后轮毂	Rear rim	1		
6	04020024	碟刹盘 (58*240*80/4)	Brake Disc	1		
7	06010023	前轮内胎 (110/70-17)	Front tube	1		
8	06010022	后轮内胎 (140/70-17)	Rear tube	1		
9	02040060	牙盘 (428/42T)	Sprocket 428-42T	1		
10	02040220	链条 (428H-134节)	Chain 428H-134	1		

随车工具 Tool Kit



序 NO.	件 号 Code name	中文名称 Chinese	英文名称 Description	数量 Q' ty	单价 ¥ \$	
		随车工具	Tool Kit	1套		
1	16010005	12-14开口扳手	Open Spanner12-14	1		
2	16010004	8-10开口扳手	Open Spanner8-10	1		
3	16010006	双头螺丝刀	Dual-Purpose Screwdriver	1		
4	16010008	18对边火花塞套筒	Sparking Plug Box	1		
5	16010002	6mm内六角扳手	Socket Head Screw	1		
6	16990010	随车工具包	Tool Kit	1		
7	09060019	后视镜	Wing mirror	1		
8	10990001	电瓶（12N7A-BS）	Battery	1		
9	6020128	电瓶扎带160MM	Battery Strap	1		
