

EAGLE-QX-200 Assembly Guide



1. Install Handle Bar



2. Install Rear Carrier Bracket



3. Install Rear Shock



tips: It's best to have 2 person align the both right and left side shock together for proper and easier installation

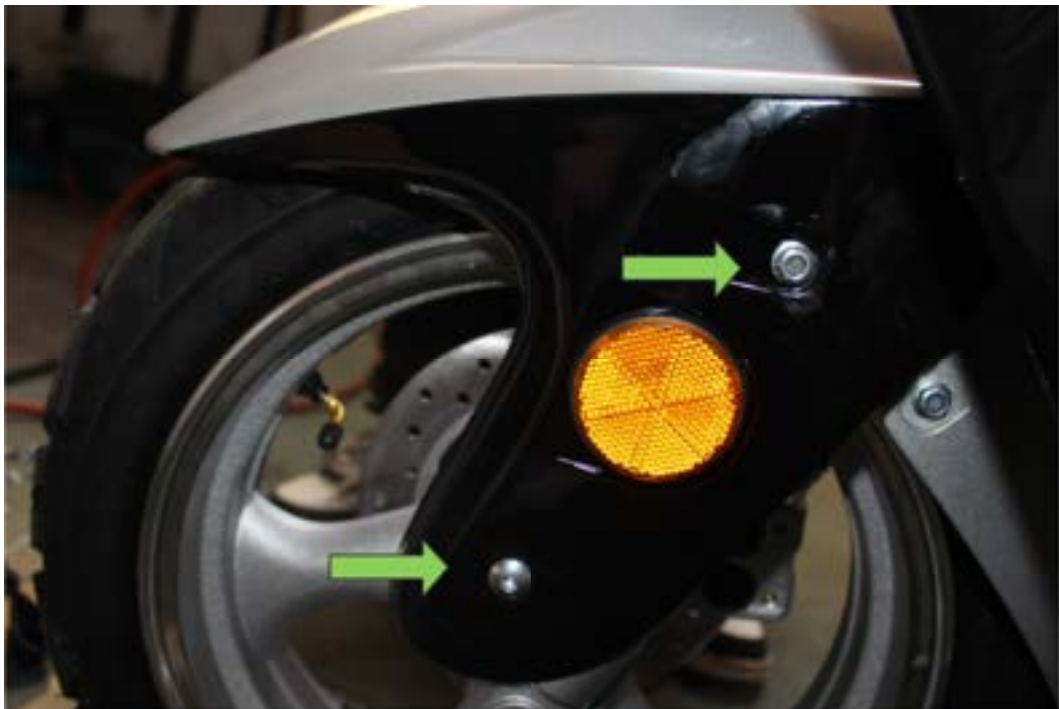


3. Install Front Wheel



tips: Insert the front axle bolt from disc brake side for easier installation

4. Install Front Fender



5. Install Headlight and Panel



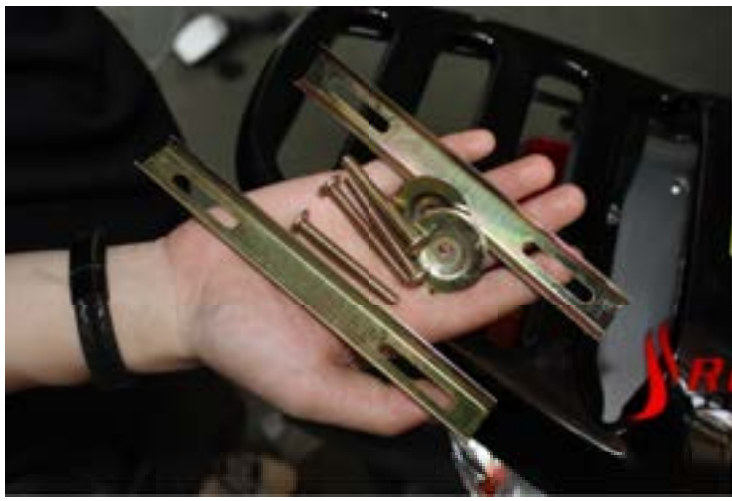
tips: Make sure properly align the panel before tighten with screw





6. Install Rear Carrier





7.Install Rear view mirror





8. Install Battery



9. Install Floor Mat

